

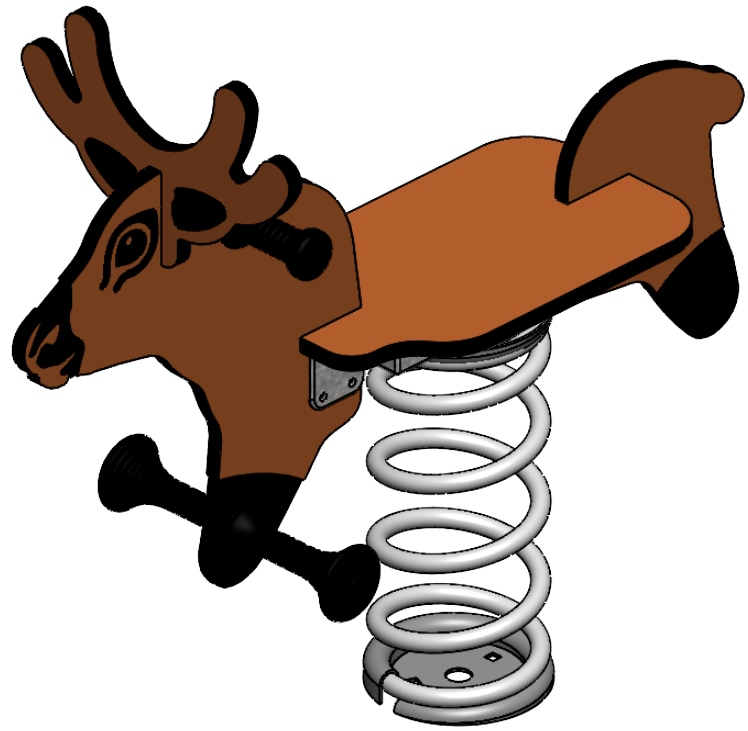
A

B

C

D

E



UNLESS OTHERWISE SPECIFIED:
 DIMENSIONS ARE IN MILLIMETERS
 WEIGHT ARE IN KILOGRAMM

PART NUMBER / DWG NO.:
VL63

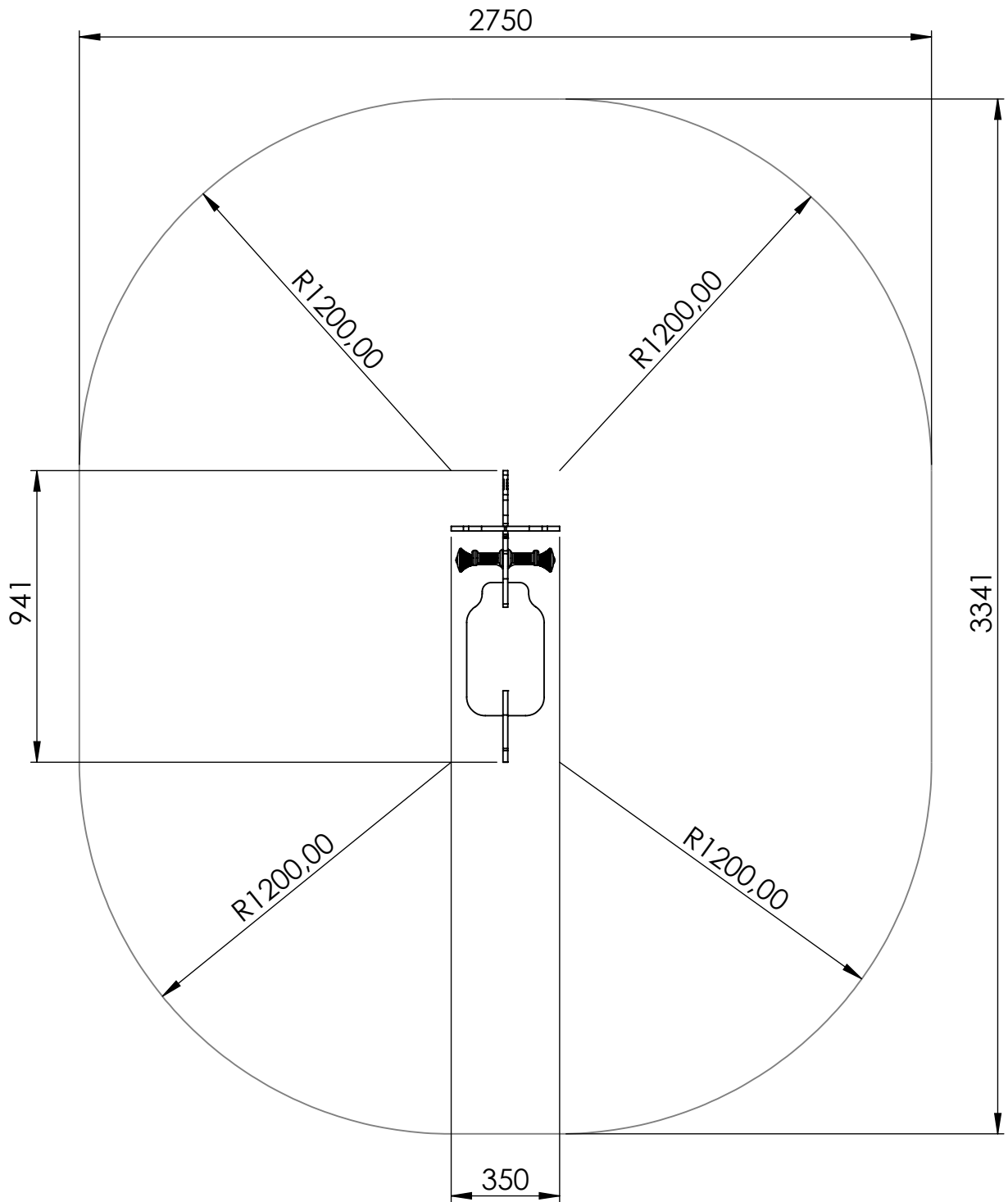
	NAME	SIGNATURE	DATE	REVISION
DRAWN	E.Reispere		27.05.2024	
APPVD				

DESCRIPTION:
Spring swing CARIBOU



MATERIAL:	metal, plastic	A4
WEIGHT:	SCALE: 1:20	SHEET 1 OF 10

safety area



safety area: 7,95 m²

UNLESS OTHERWISE SPECIFIED:
DIMENSIONS ARE IN MILLIMETERS
WEIGHT ARE IN KILOGRAMM

PART NUMBER / DWG NO.:

VL63

	NAME	SIGNATURE	DATE	REVISION
DRAWN	E.Reispere		27.05.2024	
APPV'D				

DESCRIPTION:

Spring swing CARIBOU

MATERIAL:

metal, plastic

A4

WEIGHT:

SCALE: 1:20

SHEET 2 OF 10



Tiptiptap ^{OO}

foundation

A

B

C

D

E

2750

3341

Ø 500,00

UNLESS OTHERWISE SPECIFIED:
DIMENSIONS ARE IN MILLIMETERS
WEIGHT ARE IN KILOGRAMM

PART NUMBER / DWG NO.:
VL63

	NAME	SIGNATURE	DATE	REVISION
DRAWN	E.Reispere		27.05.2024	
APPV'D				

DESCRIPTION:
Spring swing CARIBOU



MATERIAL:	metal, plastic	A4
-----------	----------------	----

WEIGHT:	SCALE: 1:20	SHEET 3 OF 10
---------	-------------	---------------

dimensions

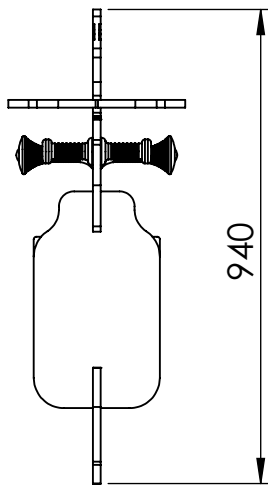
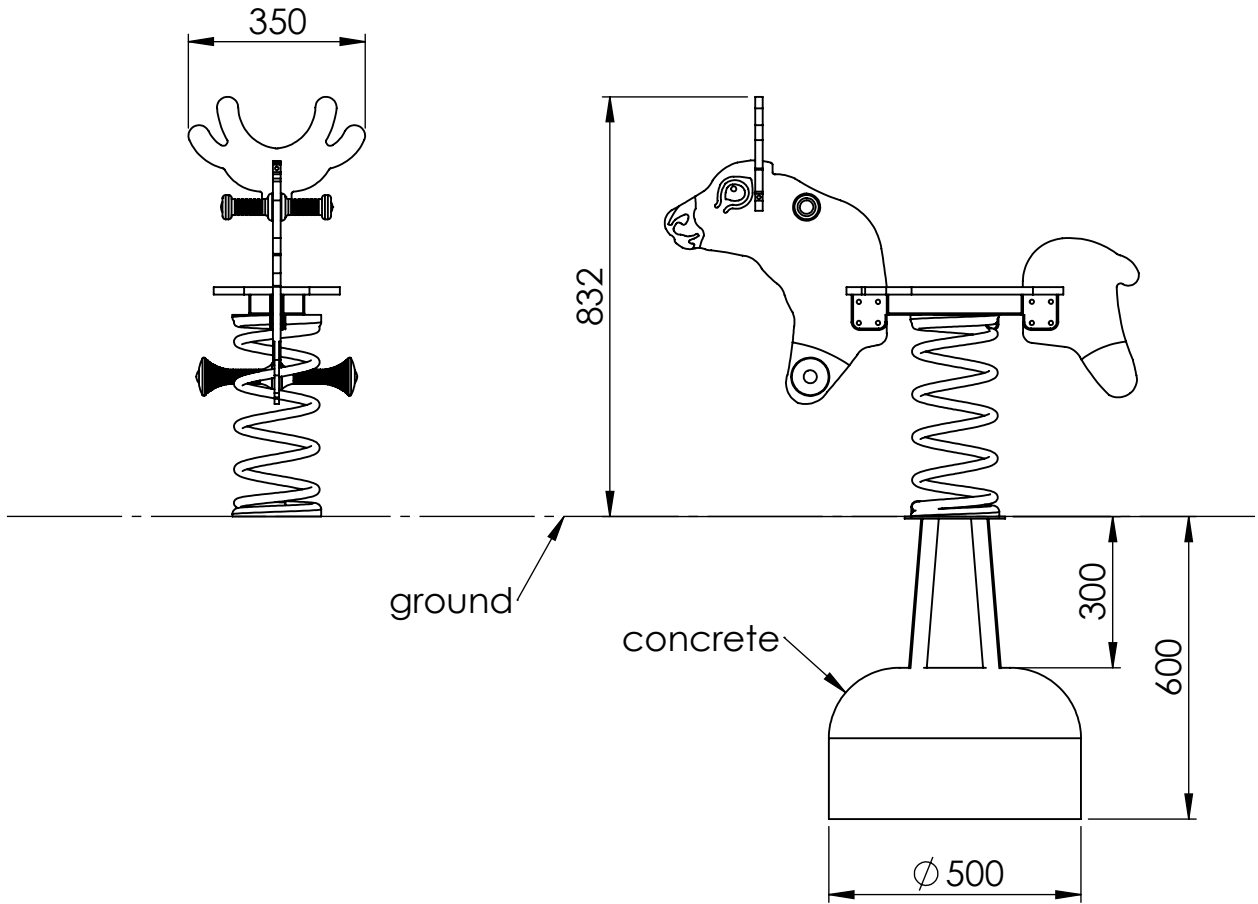
A

B

C

D

E



UNLESS OTHERWISE SPECIFIED:
 DIMENSIONS ARE IN MILLIMETERS
 WEIGHT ARE IN KILOGRAMM

PART NUMBER / DWG NO.:

VL63

	NAME	SIGNATURE	DATE	REVISION
DRAWN	E.Reispere		27.05.2024	
APPV'D				

DESCRIPTION:

Spring swing CARIBOU



Tiptiptap OÜ

Tiptiptap OÜ
 Veetorni 9,
 Jüri alevik, Rae vald,
 75301 Harjumaa

MATERIAL:

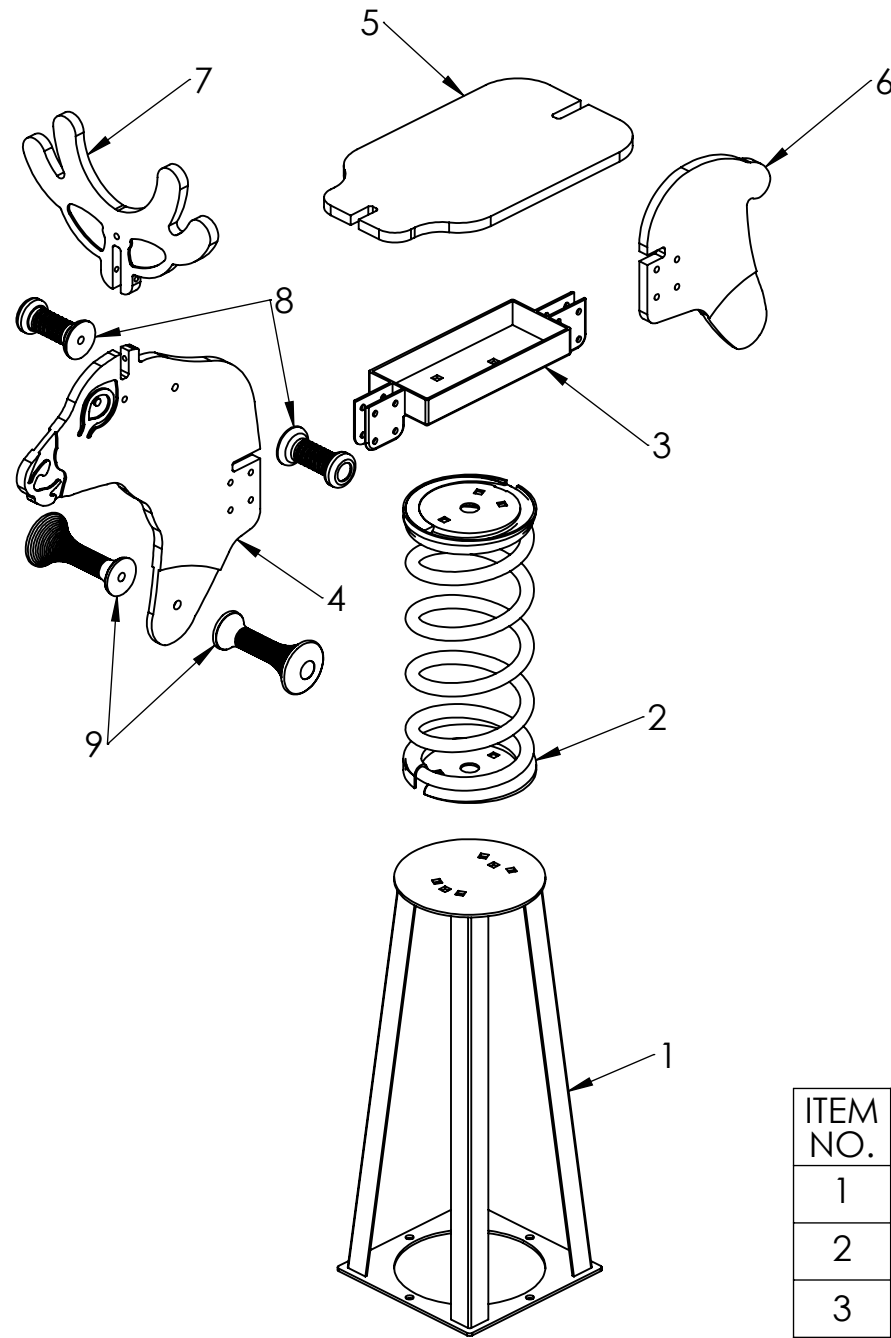
metal, plastic

A4

WEIGHT:

SCALE: 1:20

SHEET 4 OF 10



ITEM NO.	DESCRIPTION
1	ground fixing
2	spring with spring disc
3	central console
4	VL63 head panel
5	seat for spring swing
6	VL63 tail panel
7	VL63 head panel 2
8	spring swing handle
9	spring swing leg holder

UNLESS OTHERWISE SPECIFIED:
DIMENSIONS ARE IN MILLIMETERS
WEIGHT ARE IN KILOGRAMM

PART NUMBER / DWG NO.:

VL63

	NAME	SIGNATURE	DATE	REVISION
DRAWN	E.Reispere		27.05.2024	
APPV'D				

DESCRIPTION:

Spring swing CARIBOU

MATERIAL:

metal, plastic

A4

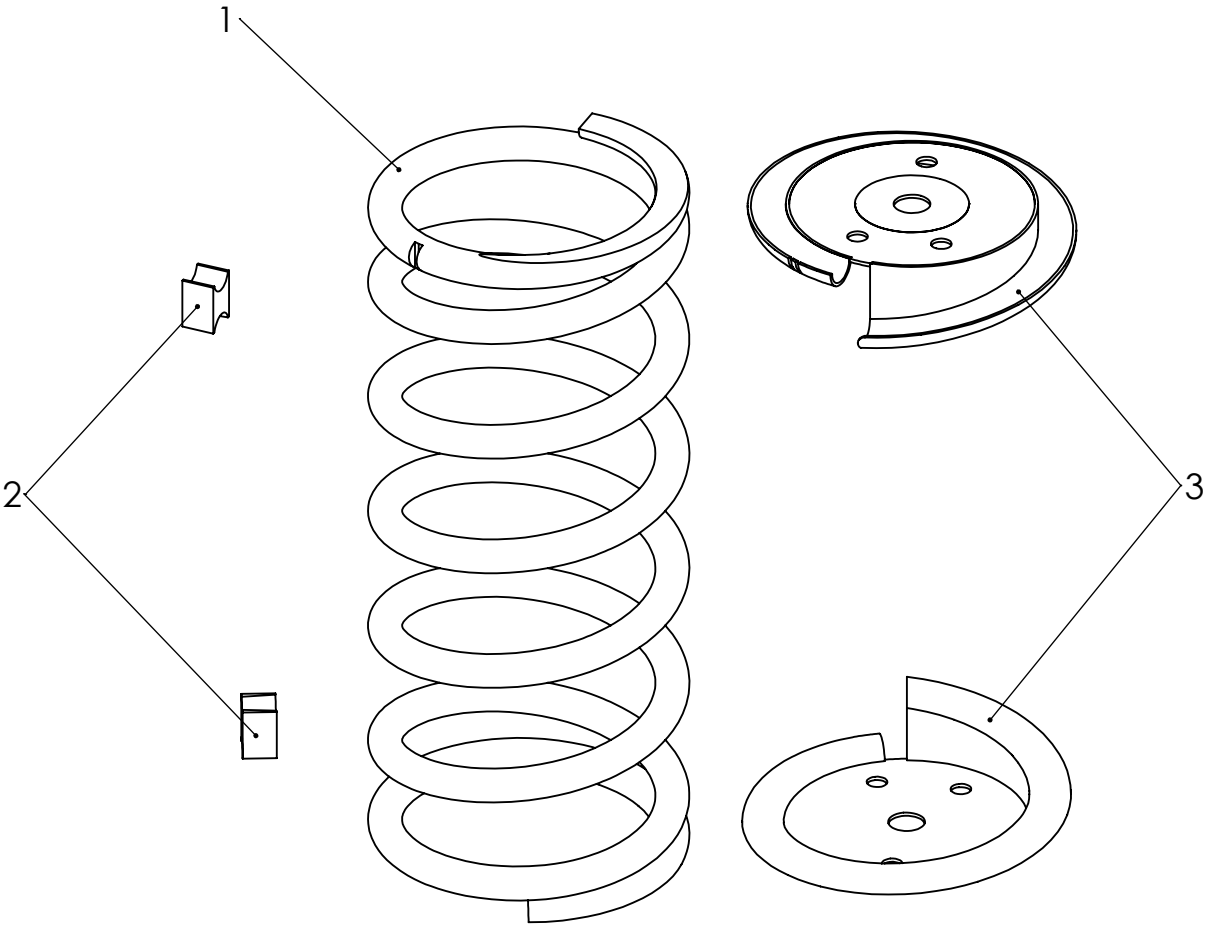
WEIGHT:

SCALE: 1:20

SHEET 5 OF 10



Tiptap OÜ



ITEM NO.	PART NUMBER	DESCRIPTION	QTY.
1	spring	painted steel	1
2	distance block	HP plastic	2
3	spring plate	painted steel	2

UNLESS OTHERWISE SPECIFIED:
DIMENSIONS ARE IN MILLIMETERS
WEIGHT ARE IN KILOGRAMM

PART NUMBER / DWG NO.:

VL63

	NAME	SIGNATURE	DATE	REVISION
DRAWN	E.Reispere		27.05.2024	
APPV'D				

DESCRIPTION:

Spring swing CARIBOU

MATERIAL:

metal, plastic

A4

WEIGHT:

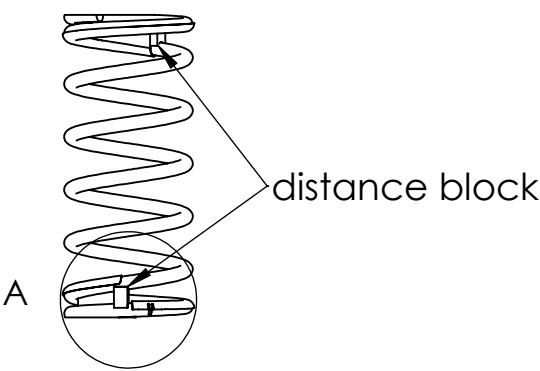
SCALE: 1:4

SHEET 6 OF 10

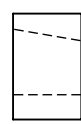
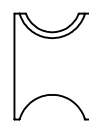
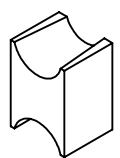


Tiptiptap OÜ

A



view 1



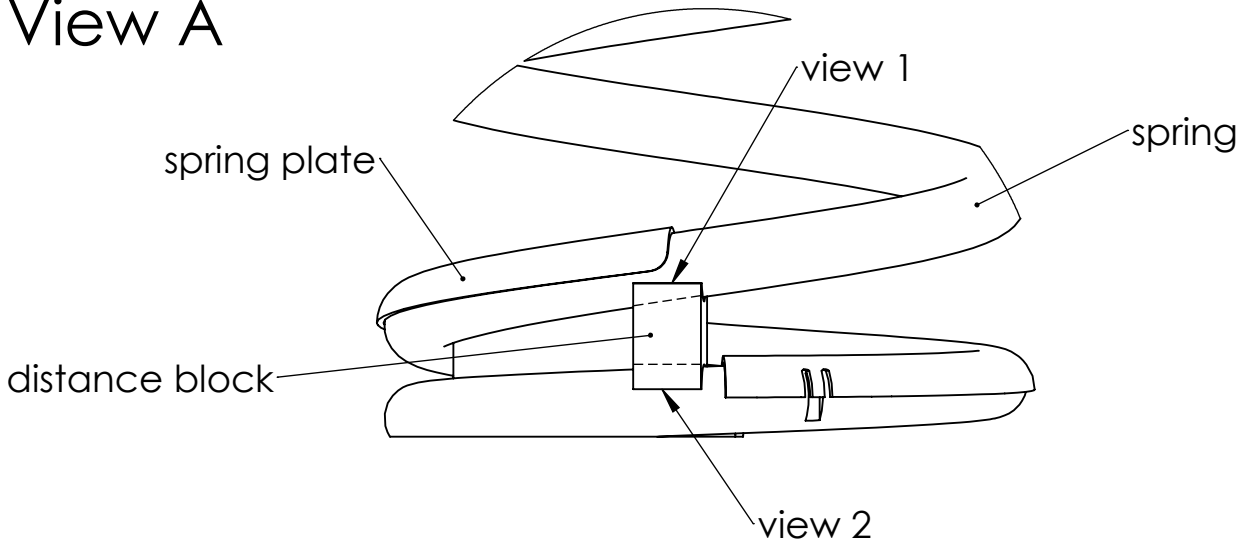
view 2



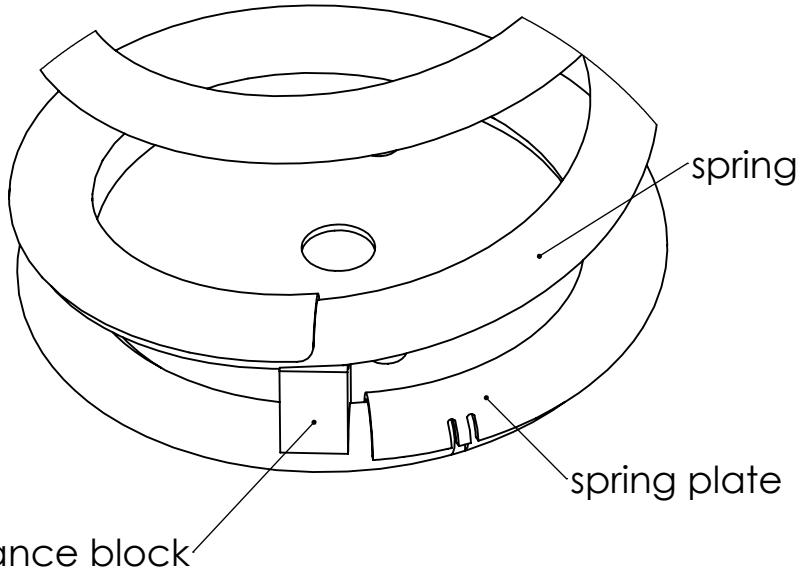
B

View A

C



D



E

UNLESS OTHERWISE SPECIFIED:
DIMENSIONS ARE IN MILLIMETERS
WEIGHT ARE IN KILOGRAMM

	NAME	SIGNATURE	DATE	REVISION
DRAWN	E.Reispere		27.05.2024	
APPV'D				

PART NUMBER / DWG NO.: VL63

DESCRIPTION: Spring swing CARIBOU

F



Tiptiptap OÜ

MATERIAL:	metal, plastic	A4
WEIGHT:		SCALE: 1:4
		SHEET 7 OF 10

A

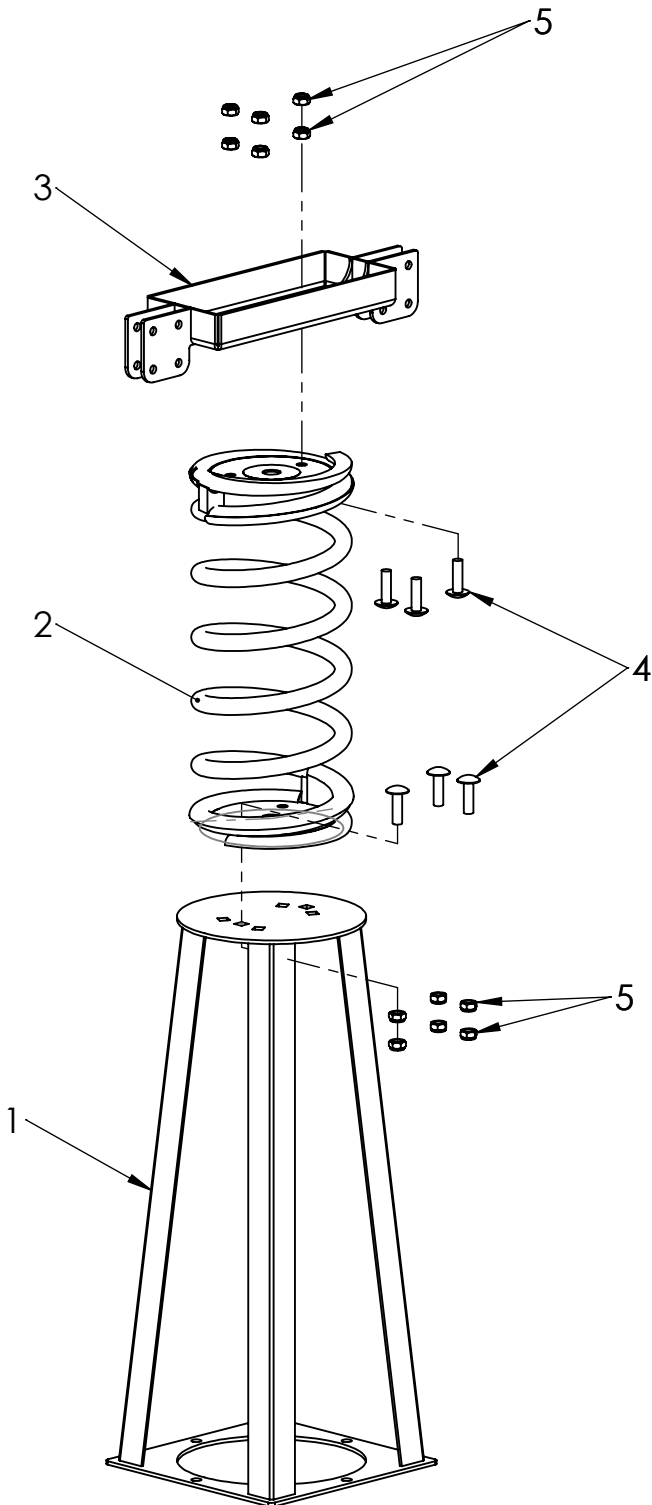
B

C

D

E

F



ITEM NO.	PART NUMBER
1	ground fixing
2	spring
3	central console
4	bolt DIN603 M10x35
5	nut DIN985 M10

UNLESS OTHERWISE SPECIFIED: DIMENSIONS ARE IN MILLIMETERS WEIGHT ARE IN KILOGRAMM				
	NAME	SIGNATURE	DATE	REVISION
DRAWN	E.Reispere		27.05.2024	
APPV'D				

PART NUMBER / DWG NO.: **VL63**

DESCRIPTION: **Spring swing CARIBOU**



MATERIAL:	metal, plastic	A4
WEIGHT:		SCALE: 1:20
		SHEET 8 OF 10

A

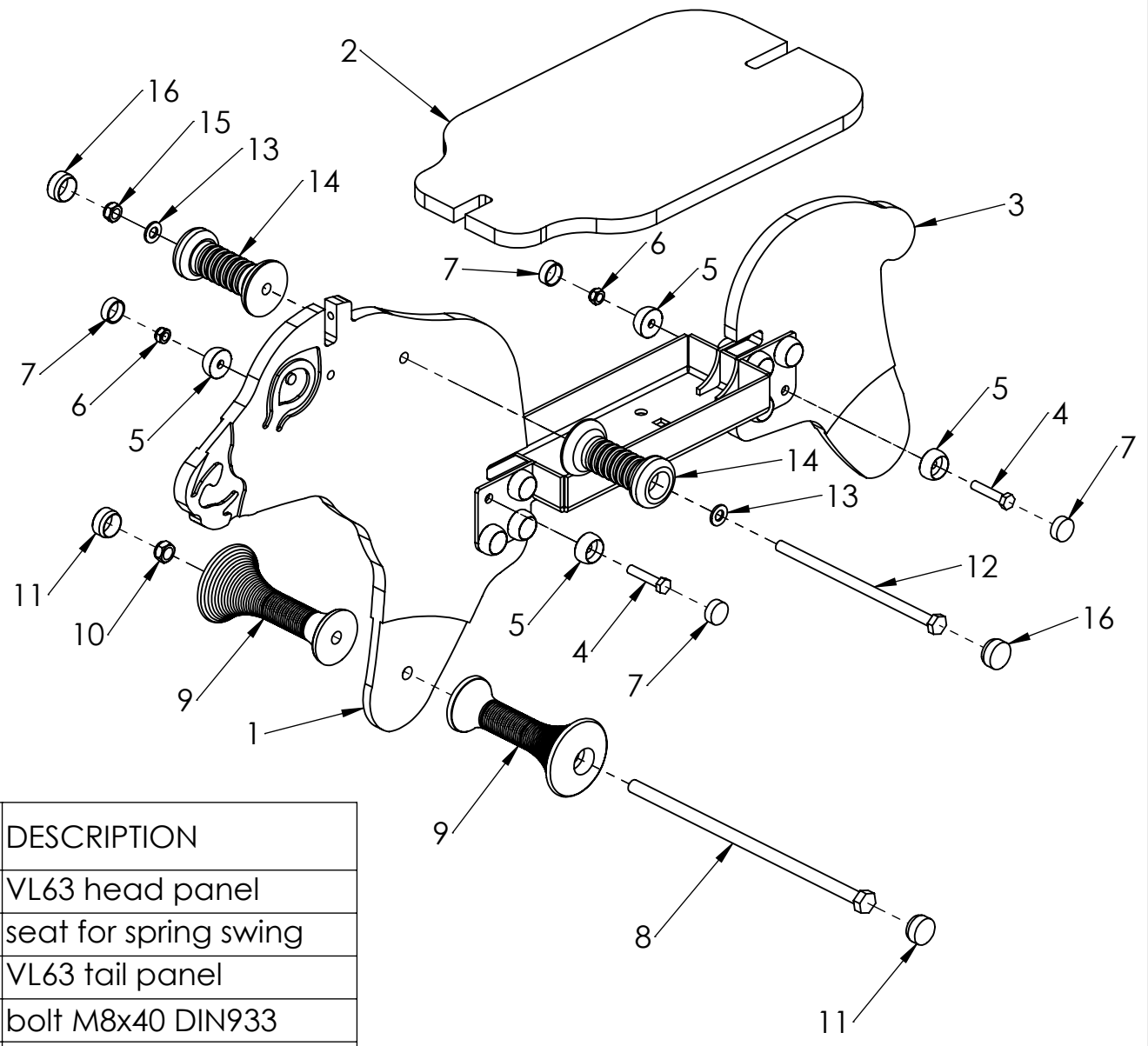
B

C

D

E

F



ITEM NO.	DESCRIPTION
1	VL63 head panel
2	seat for spring swing
3	VL63 tail panel
4	bolt M8x40 DIN933
5	nut cover M8
6	nut M8 DIN985
7	nut cover cap M8
8	bolt M12x295 DIN931
9	spring swing leg holder
10	nut M12 DIN985
11	leg holder cap
12	bolt M10x200 DIN931
13	washer M10 DIN125
14	spring swing handle
15	nut M10 DIN985
16	handle cap

UNLESS OTHERWISE SPECIFIED:
 DIMENSIONS ARE IN MILLIMETERS
 WEIGHT ARE IN KILOGRAMM

PART NUMBER / DWG NO.:
VL63

	NAME	SIGNATURE	DATE	REVISION
DRAWN	E.Reispere		27.05.2024	
APP'VD				

DESCRIPTION:
Spring swing CARIBOU



MATERIAL:	metal, plastic	A4
WEIGHT:		SCALE: 1:20
		SHEET 9 OF 10

A

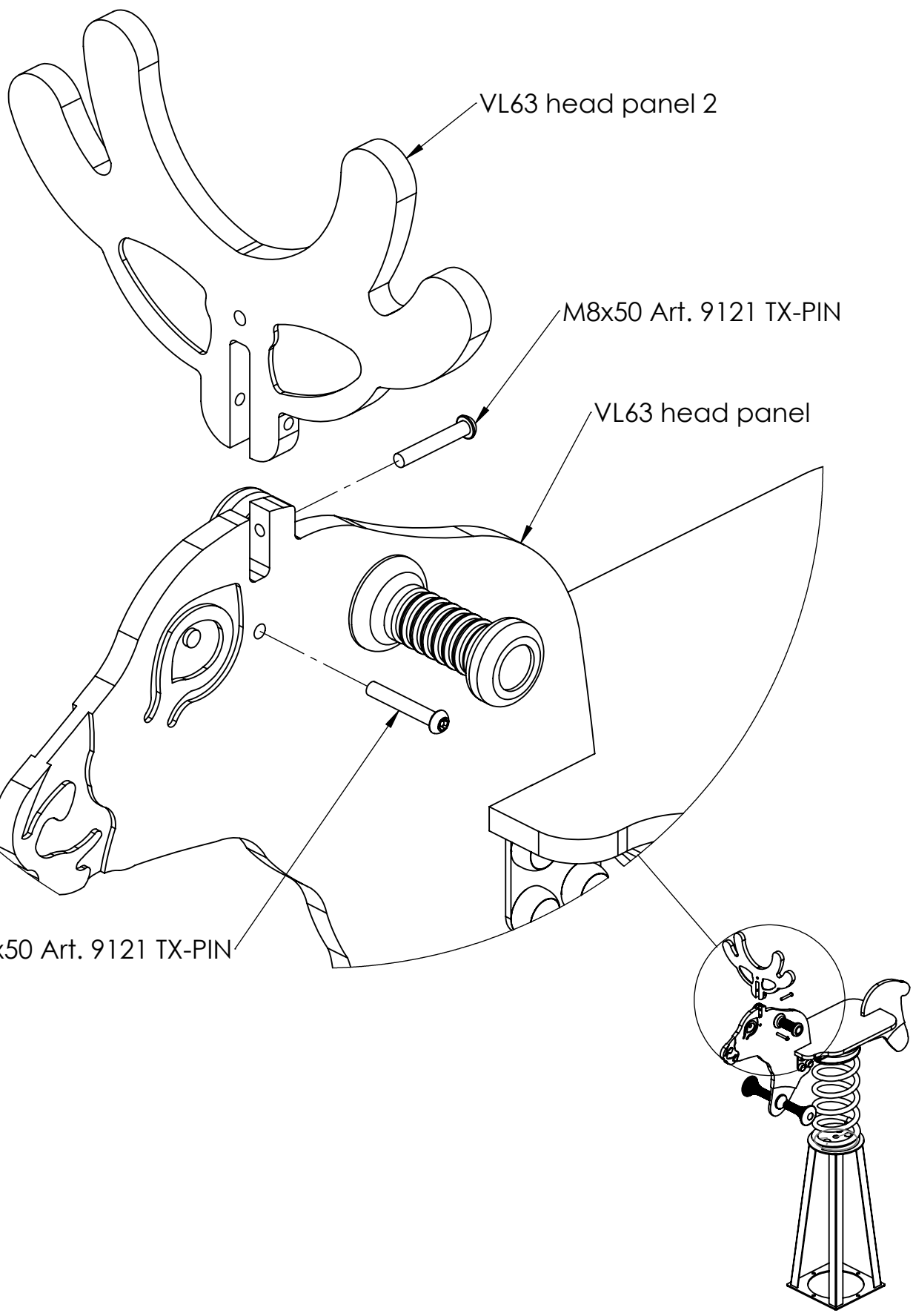
B

C

D

E

F



VL63 head panel 2

M8x50 Art. 9121 TX-PIN

VL63 head panel

M8x50 Art. 9121 TX-PIN

UNLESS OTHERWISE SPECIFIED: DIMENSIONS ARE IN MILLIMETERS WEIGHT ARE IN KILOGRAMM				
	NAME	SIGNATURE	DATE	REVISION
DRAWN	E.Reispere		27.05.2024	
APPV'D				

PART NUMBER / DWG NO.:
VL63

DESCRIPTION:
Spring swing CARIBOU

MATERIAL: **metal, plastic** A4

WEIGHT: SCALE: 1:20 SHEET 10 OF 10

