

A

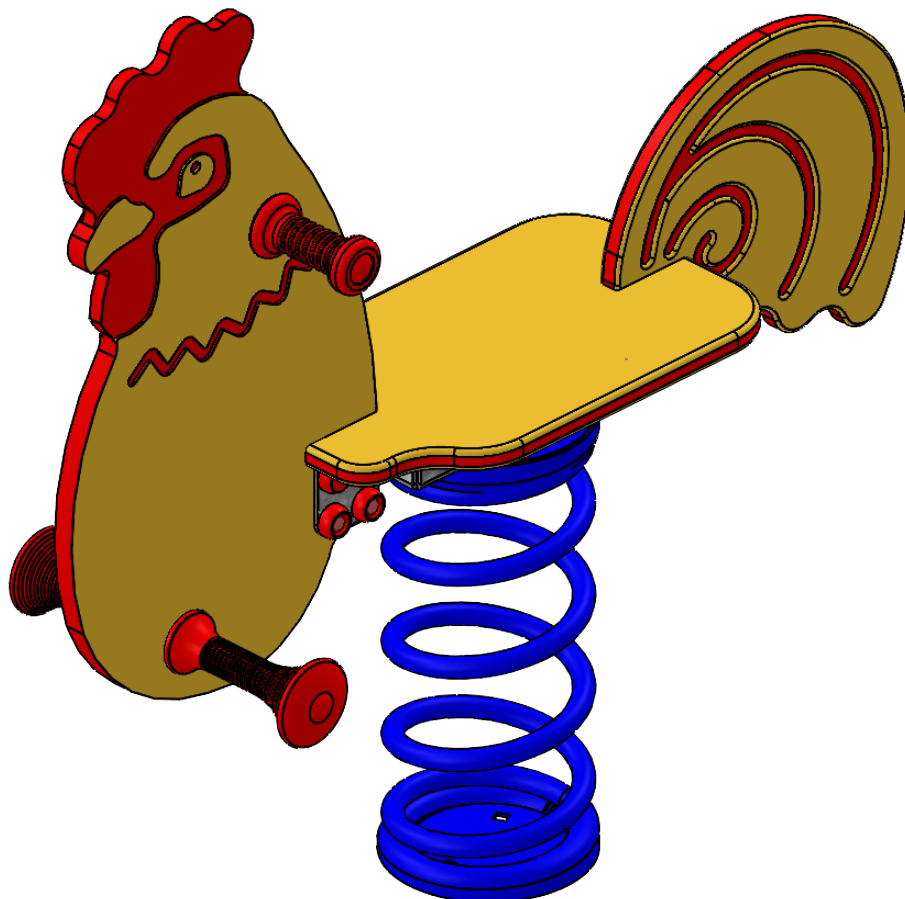
B

C

D

E

F



UNLESS OTHERWISE SPECIFIED:
 DIMENSIONS ARE IN MILLIMETERS
 WEIGHT ARE IN KILOGRAMM

PART NUMBER / DWG NO.:
VL60

	NAME	SIGNATURE	DATE	REVISION
DRAWN	E.Reispere		19.12.2023	
APPVD				

DESCRIPTION:
Spring swing ROOSTER



MATERIAL: wood, metal, plastic A4

WEIGHT: SCALE: 1:20 SHEET 1 OF 9

safety area

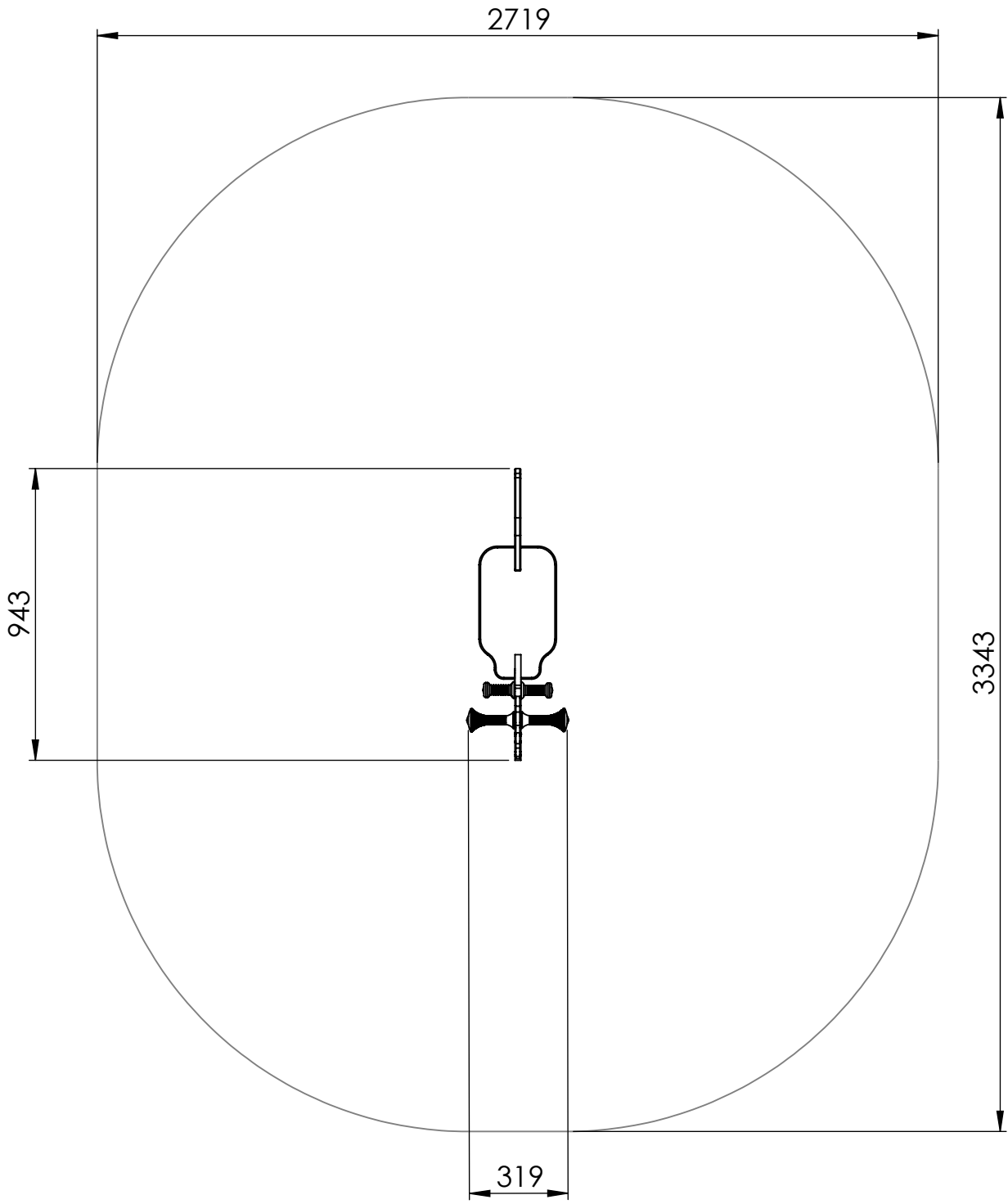
A

B

C

D

E



safety area: 7,86 m²

UNLESS OTHERWISE SPECIFIED:
 DIMENSIONS ARE IN MILLIMETERS
 WEIGHT ARE IN KILOGRAMM

PART NUMBER / DWG NO.:
VL60

	NAME	SIGNATURE	DATE	REVISION
DRAWN	E.Reispere		19.12.2023	
APPV'D				

DESCRIPTION:
Spring swing ROOSTER



MATERIAL:	wood, metal, plastic	A4
WEIGHT:		SCALE: 1:20
		SHEET 2 OF 9

foundation

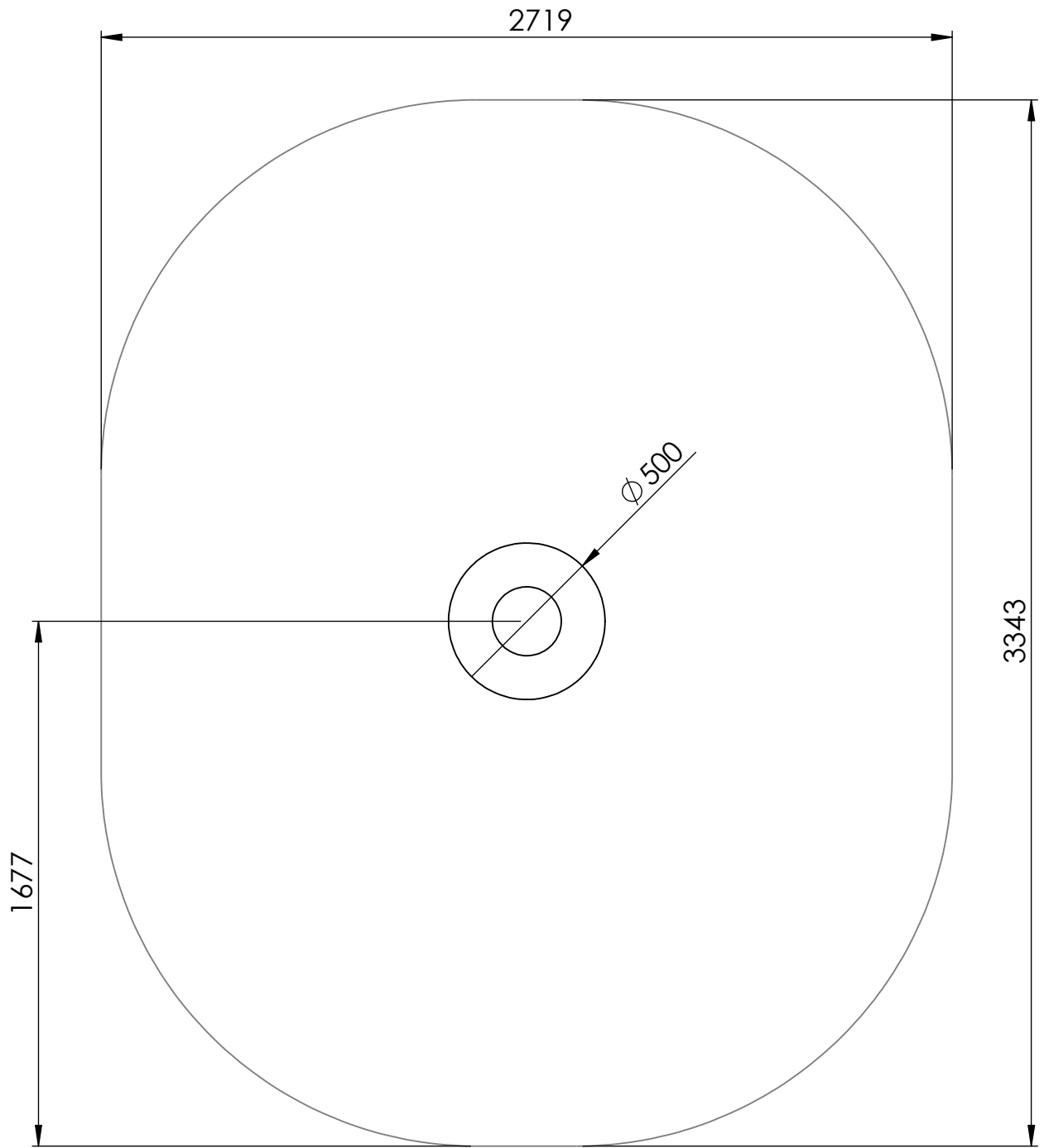
A

B

C

D

E



UNLESS OTHERWISE SPECIFIED:
DIMENSIONS ARE IN MILLIMETERS
WEIGHT ARE IN KILOGRAMM

PART NUMBER / DWG NO.:
VL60

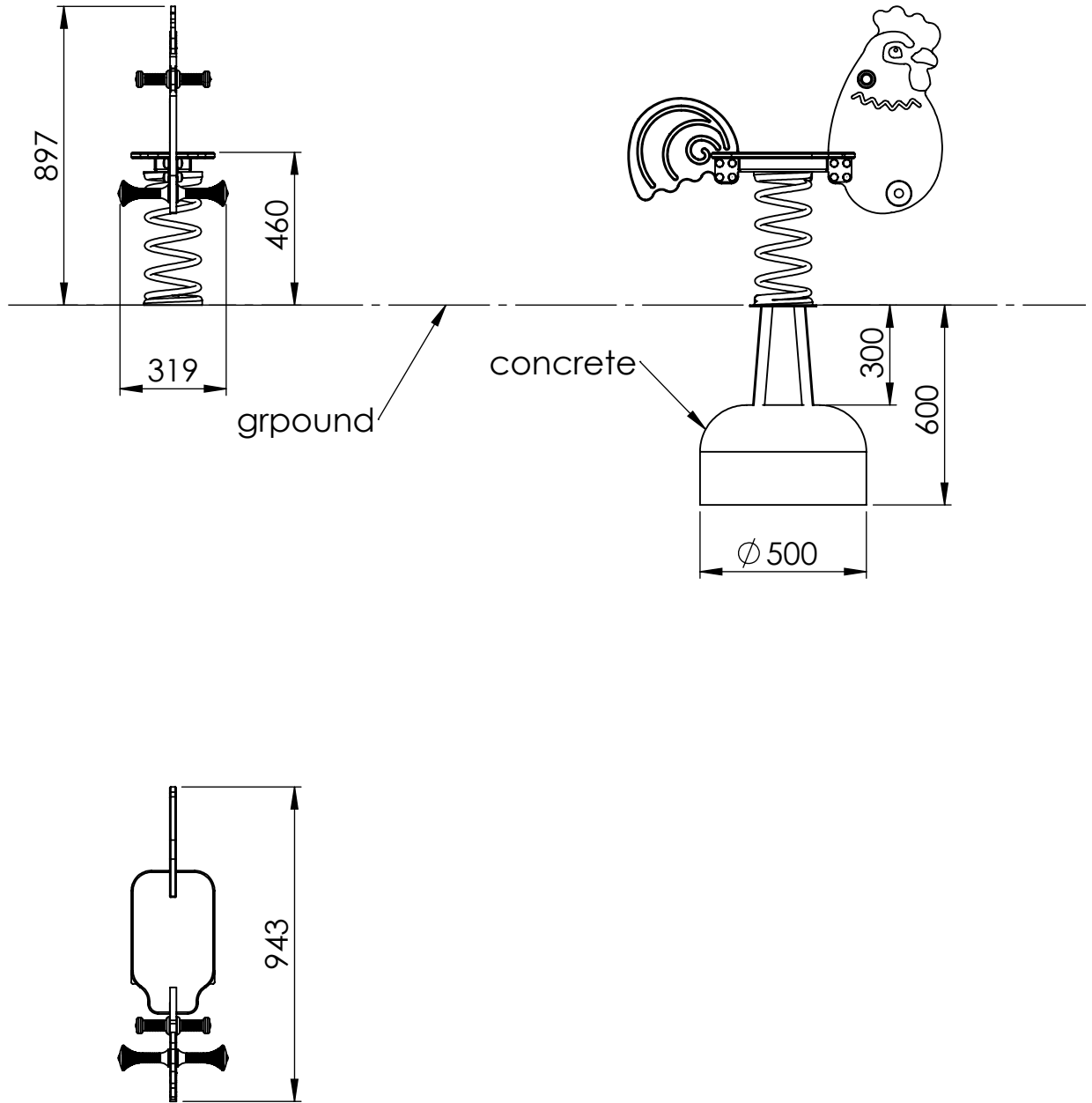
	NAME	SIGNATURE	DATE	REVISION
DRAWN	E.Reispere		19.12.2023	
APPV'D				

DESCRIPTION:
Spring swing ROOSTER



MATERIAL:	wood, metal, plastic	A4
WEIGHT:		SCALE: 1:20
		SHEET 3 OF 9

dimensions



UNLESS OTHERWISE SPECIFIED:
DIMENSIONS ARE IN MILLIMETERS
WEIGHT ARE IN KILOGRAMM

PART NUMBER / DWG NO.:
VL60

	NAME	SIGNATURE	DATE	REVISION
DRAWN	E.Reispere		19.12.2023	
APPV'D				

DESCRIPTION:
Spring swing ROOSTER


Tiptiptap OÜ
 Veetorni 9,
 Jüri alevik, Rae vald,
 75301 Harjumaa

MATERIAL:	wood, metal, plastic	A4
WEIGHT:		
SCALE:	1:20	
SHEET:	4 OF 9	

A

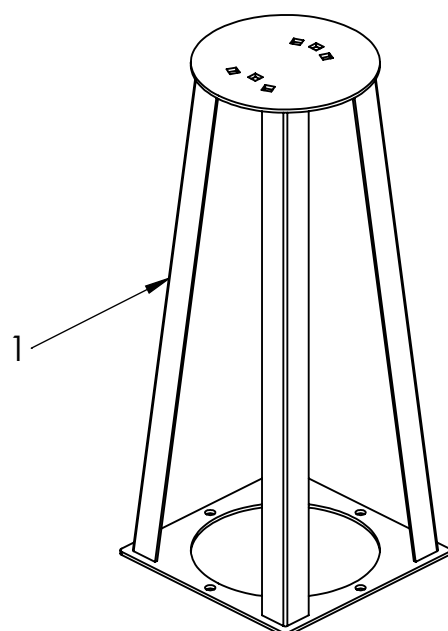
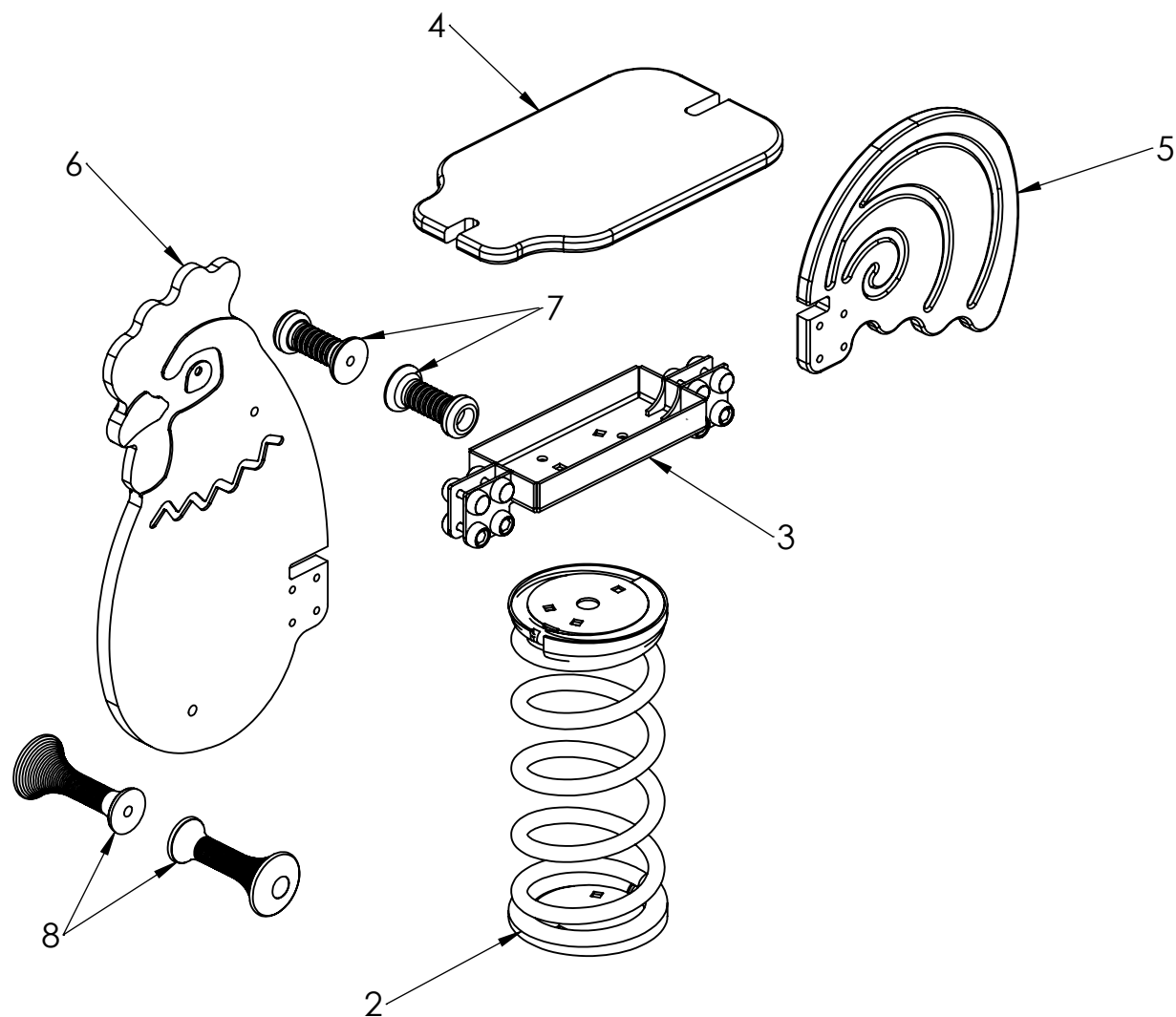
B

C

D

E

F



ITEM NO.	PART NUMBER
1	ground fixing
2	spring with spring disk
3	central console
4	seat for spring swing
5	VL60 tail panel
6	VL60 head panel
7	Spring swing handle
8	Spring swing leg holder

UNLESS OTHERWISE SPECIFIED:
DIMENSIONS ARE IN MILLIMETERS
WEIGHT ARE IN KILOGRAMM

PART NUMBER / DWG NO.:

VL60

	NAME	SIGNATURE	DATE	REVISION
DRAWN	E.Reispere		19.12.2023	
APPV'D				

DESCRIPTION:

Spring swing ROOSTER

MATERIAL:

wood, metal, plastic

A4

WEIGHT:

SCALE: 1:20

SHEET 5 OF 9



Tiptap ⁰⁰

A

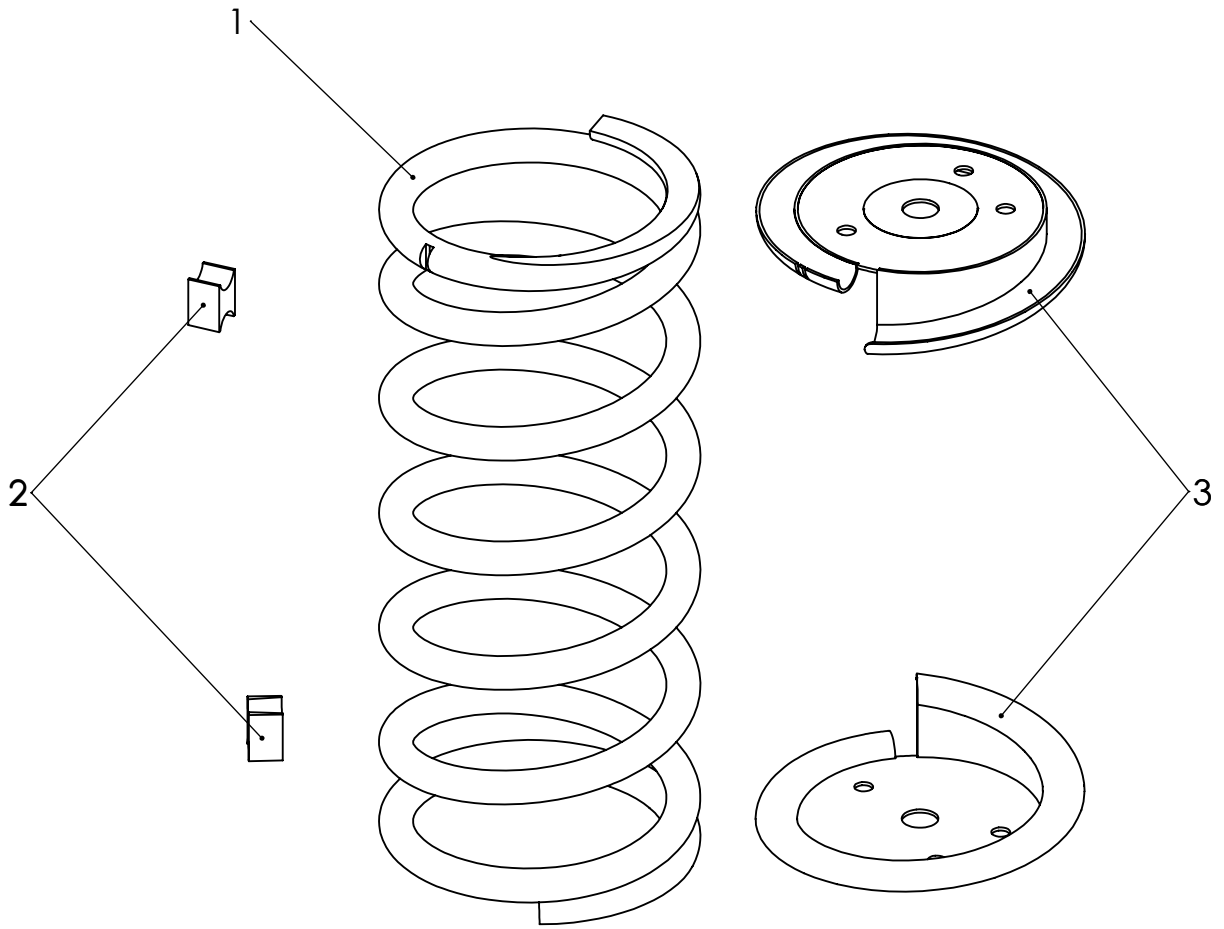
B

C

D

E

F



ITEM NO.	PART NUMBER	DESCRIPTION	QTY.
1	spring	painted steel	1
2	distance block	HP plastic	2
3	spring plate	painted steel	2

UNLESS OTHERWISE SPECIFIED:
 DIMENSIONS ARE IN MILLIMETERS
 WEIGHT ARE IN KILOGRAMM

PART NUMBER / DWG NO.:

VL60

	NAME	SIGNATURE	DATE	REVISION
DRAWN	E.Reispere		19.12.2023	
APPV'D				

DESCRIPTION:

Spring swing ROOSTER

MATERIAL:

wood, metal, plastic

A4

WEIGHT:

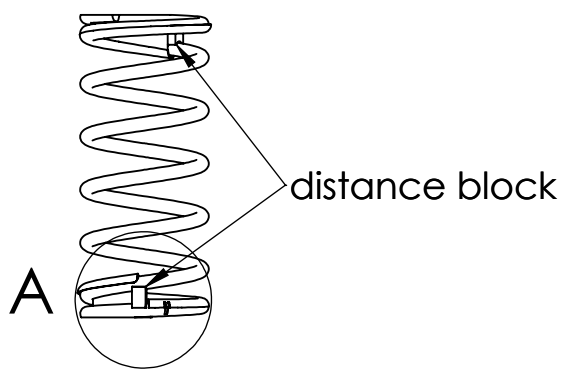
SCALE: 1:4

SHEET 6 OF 9

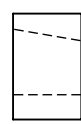
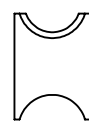
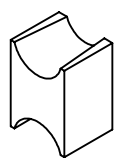


Tiptiptap OÜ

A



view 1

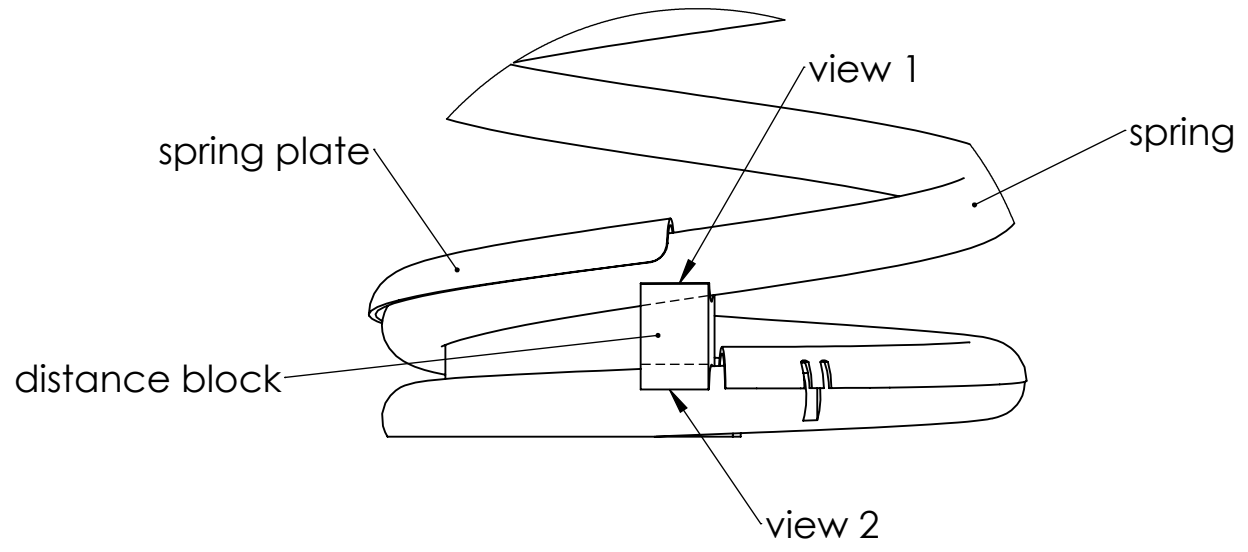


view 2

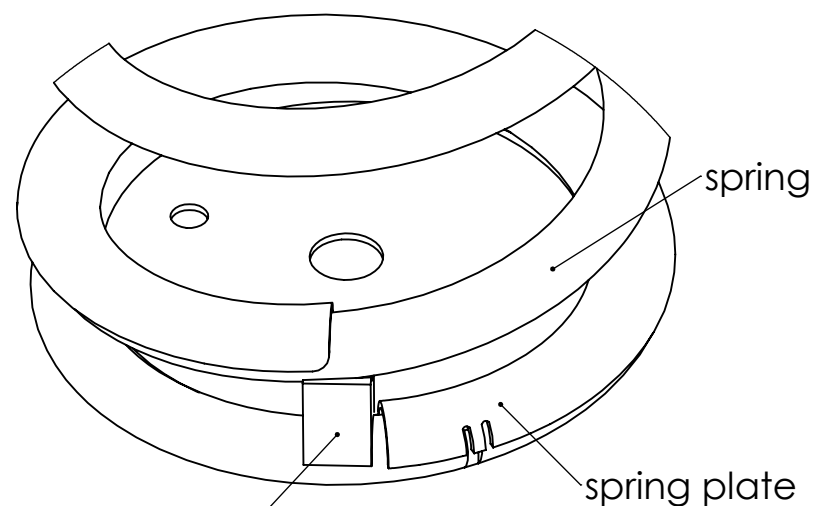


B

C



D



E

F

UNLESS OTHERWISE SPECIFIED:
DIMENSIONS ARE IN MILLIMETERS
WEIGHT ARE IN KILOGRAMM

	NAME	SIGNATURE	DATE	REVISION
DRAWN	E.Reispere		19.12.2023	
APPV'D				

PART NUMBER / DWG NO.:	VL60
DESCRIPTION:	Spring swing ROOSTER



MATERIAL:	wood, metal, plastic	A4
WEIGHT:		SCALE: 1:4
		SHEET 7 OF 9

A

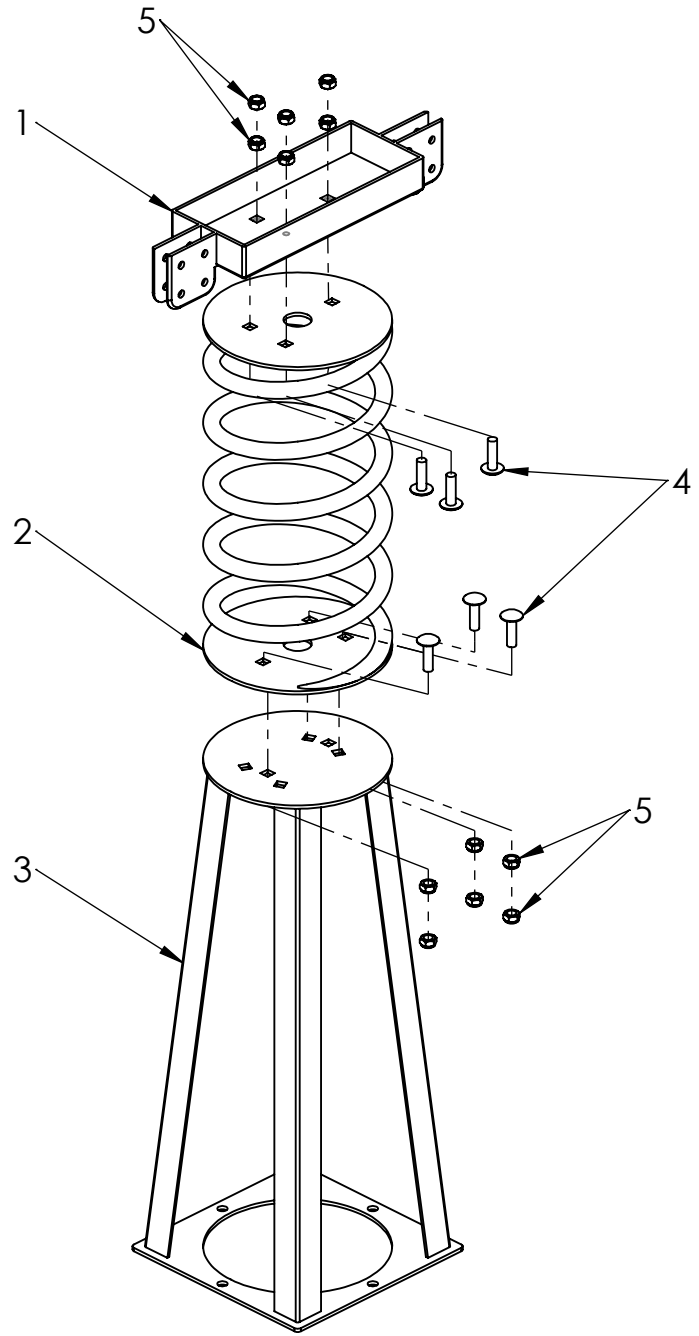
B

C

D

E

F



ITEM NO.	PART NUMBER
1	central console
2	spring with spring disk
3	ground fixing
4	bolt DIN603 M10x35
5	nut DIN985 M10

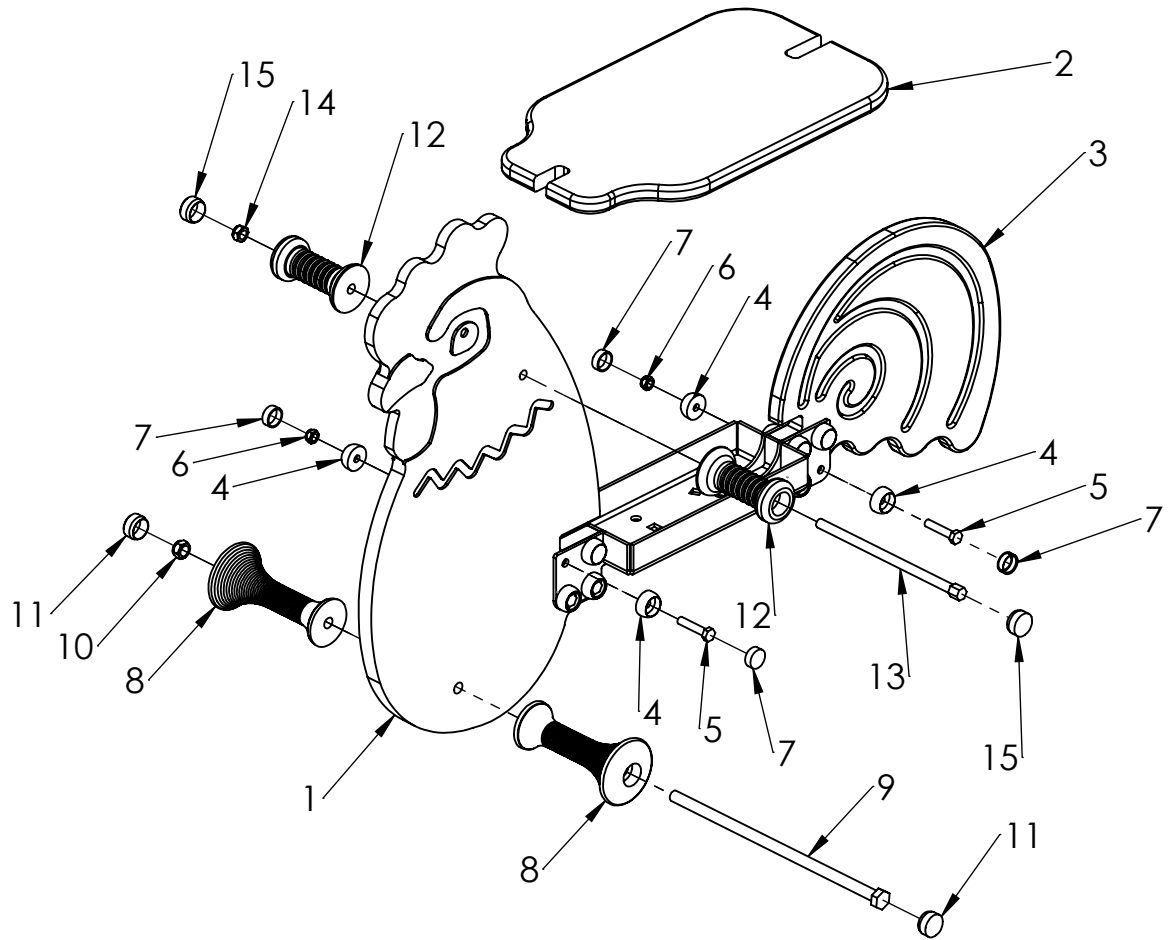
UNLESS OTHERWISE SPECIFIED: DIMENSIONS ARE IN MILLIMETERS WEIGHT ARE IN KILOGRAMM				
	NAME	SIGNATURE	DATE	REVISION
DRAWN	E.Reispere		19.12.2023	
APPV'D				


PART NUMBER / DWG NO.:	VL60
DESCRIPTION:	Spring swing ROOSTER



MATERIAL:	wood, metal, plastic	A4
WEIGHT:		SCALE: 1:10
		SHEET 8 OF 9

ITEM NO.	PART NUMBER
1	VL60 head panel
2	seat for spring swing
3	VL60 tail panel
4	nut cover M8
5	bolt DIN933 M8x40
6	nut DIN985 M8
7	nut cover cap M8
8	Spring swing leg holder
9	bolt M12x305 DIN931
10	nut DIN985 M12
11	Spring swing leg holder cap
12	Spring swing handle
13	bolt M10x200 DIN931
14	nut DIN985 M10
15	Spring swing handle cap



UNLESS OTHERWISE SPECIFIED: DIMENSIONS ARE IN MILLIMETERS WEIGHT ARE IN KILOGRAMM					PART NUMBER / DWG NO.: VL60	
	NAME	SIGNATURE	DATE	REVISION	DESCRIPTION: Spring swing ROOSTER	
DRAWN	E.Reispere		19.12.2023		MATERIAL: wood, metal, plastic	
APPV'D					A4	
 Tiptap ^{OO}					WEIGHT:	
					SCALE: 1:10	
					SHEET 9 OF 9	