

A

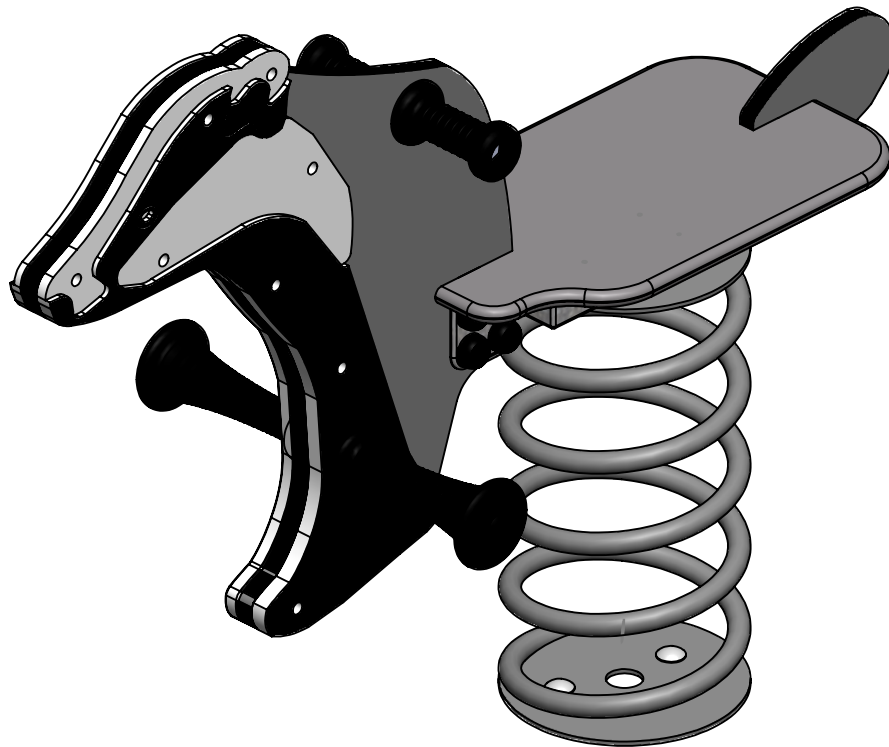
B

C

D

E

F



UNLESS OTHERWISE SPECIFIED:  
 DIMENSIONS ARE IN MILLIMETERS  
 WEIGHT ARE IN KILOGRAMM

PART NUMBER / DWG NO.:

VL52

	NAME	SIGNATURE	DATE	REVISION
DRAWN	E.Reispere		01.11.2022	
APPV'D				

DESCRIPTION:

Spring swing BADGER



Tiptiptap<sup>00</sup>

MATERIAL:

metal, plastic

A4

WEIGHT:

SCALE: 1:20

SHEET 1 OF 10

# safety area

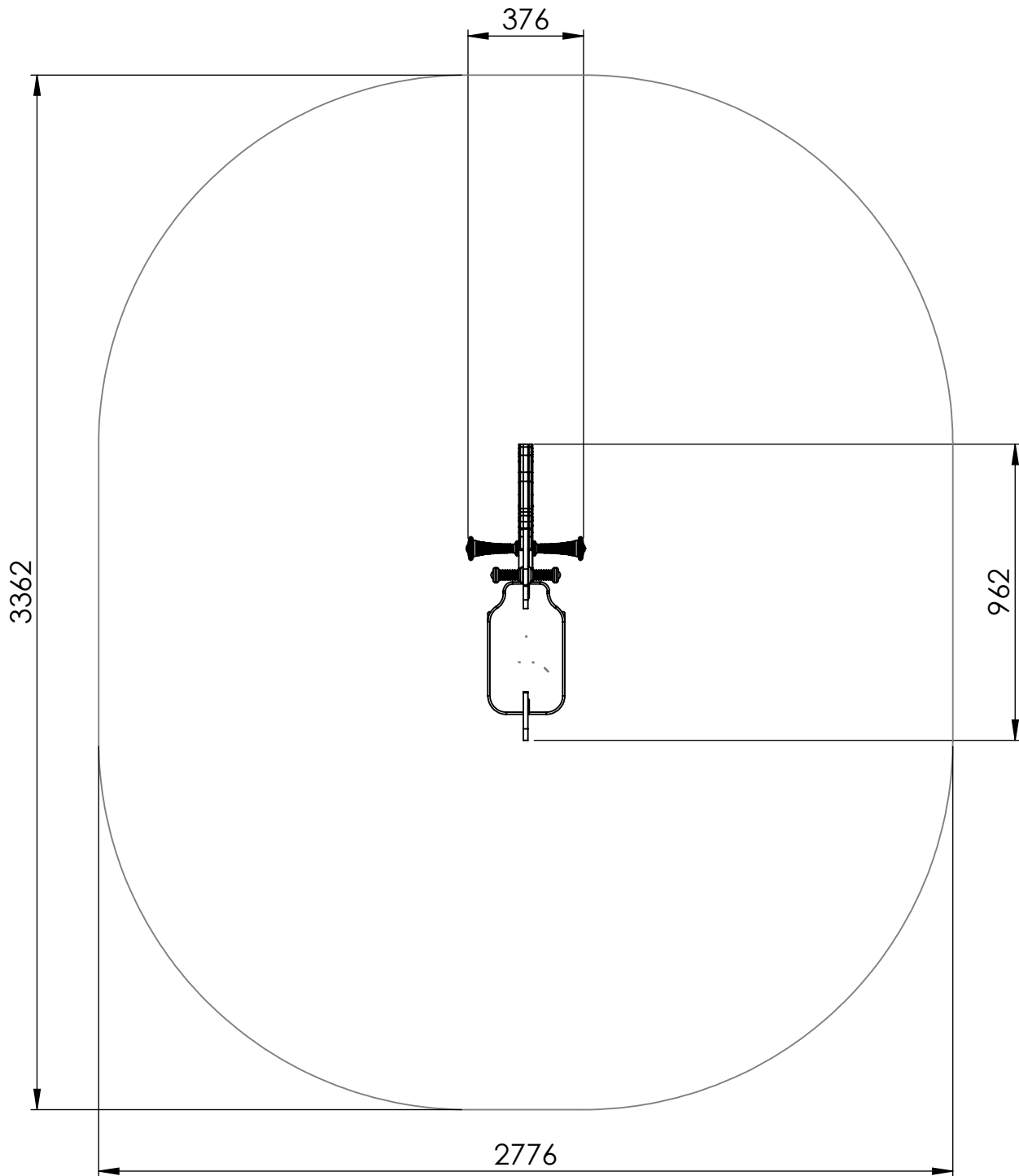
A

B

C

D

E



UNLESS OTHERWISE SPECIFIED:  
 DIMENSIONS ARE IN MILLIMETERS  
 WEIGHT ARE IN KILOGRAMM

PART NUMBER / DWG NO.:  
**VL52**

	NAME	SIGNATURE	DATE	REVISION
DRAWN	E.Reispere		01.11.2022	
APPV'D				

DESCRIPTION:  
**Spring swing BADGER**



MATERIAL: **metal, plastic** **A4**

WEIGHT: SCALE: 1:20 SHEET 2 OF 10

# foundation

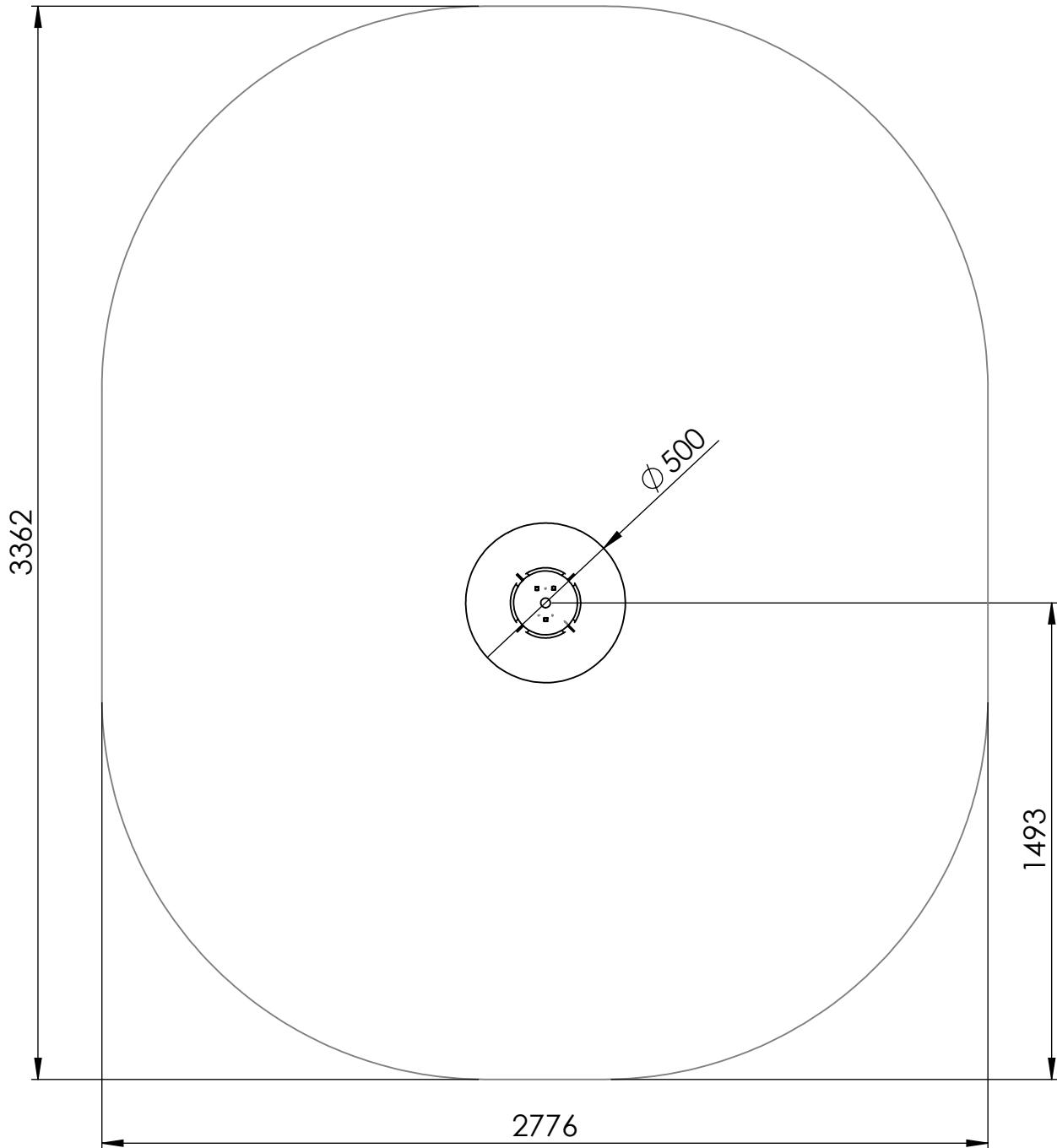
A

B

C

D

E



UNLESS OTHERWISE SPECIFIED:  
 DIMENSIONS ARE IN MILLIMETERS  
 WEIGHT ARE IN KILOGRAMM

PART NUMBER / DWG NO.:  
**VL52**

	NAME	SIGNATURE	DATE	REVISION
DRAWN	E.Reispere		01.11.2022	
APPV'D				

DESCRIPTION:  
**Spring swing BADGER**



MATERIAL:	metal, plastic	A4
WEIGHT:		SCALE: 1:20
		SHEET 3 OF 10

A

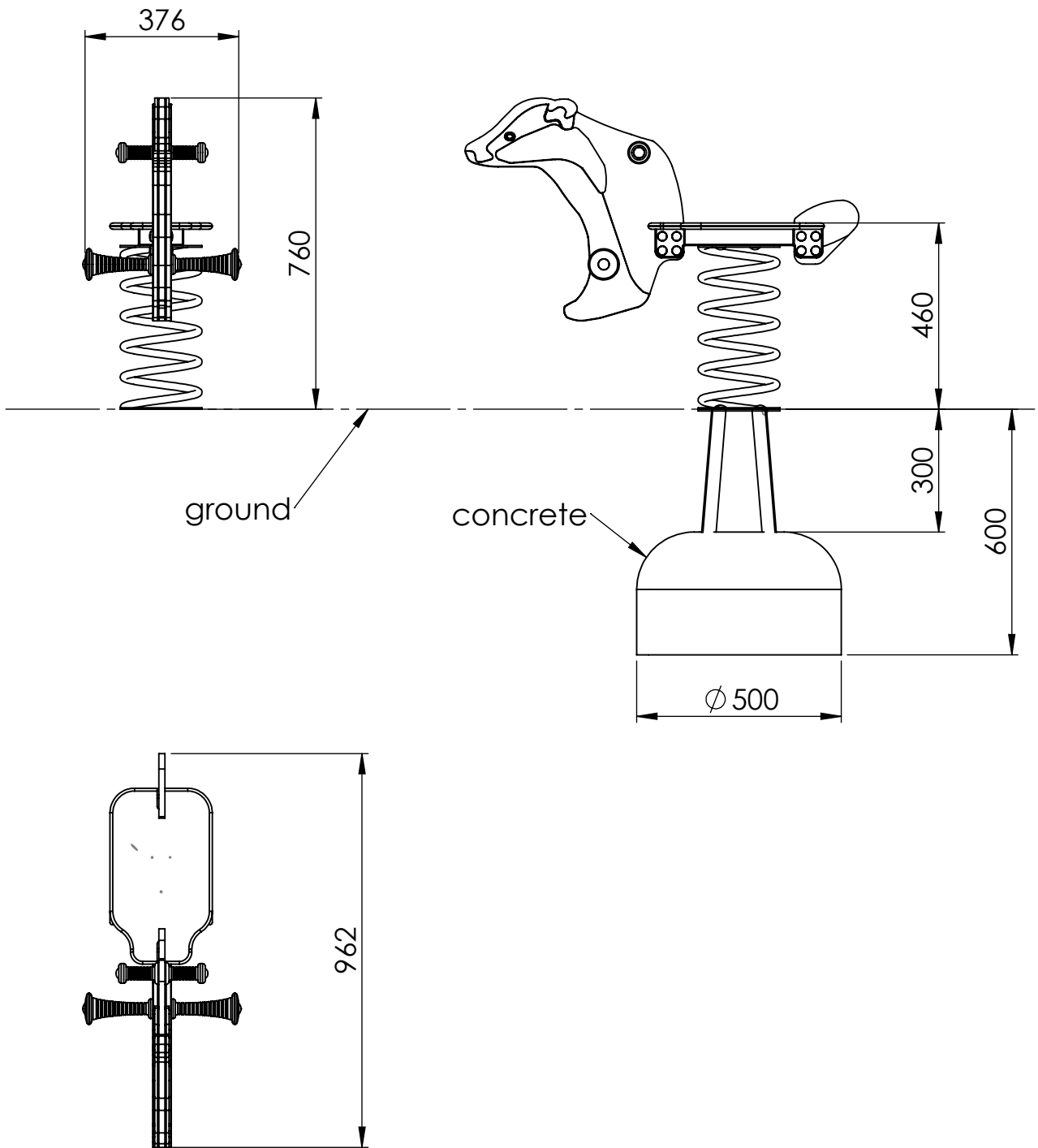
B

C

D

E

F



UNLESS OTHERWISE SPECIFIED:  
 DIMENSIONS ARE IN MILLIMETERS  
 WEIGHT ARE IN KILOGRAMM

PART NUMBER / DWG NO.:

VL52

	NAME	SIGNATURE	DATE	REVISION
DRAWN	E.Reispere		01.11.2022	
APPV'D				

DESCRIPTION:

Spring swing BADGER

MATERIAL:

metal, plastic

A4

WEIGHT:

SCALE: 1:10

SHEET 4 OF 10



**Tiptiptap** OÜ

A

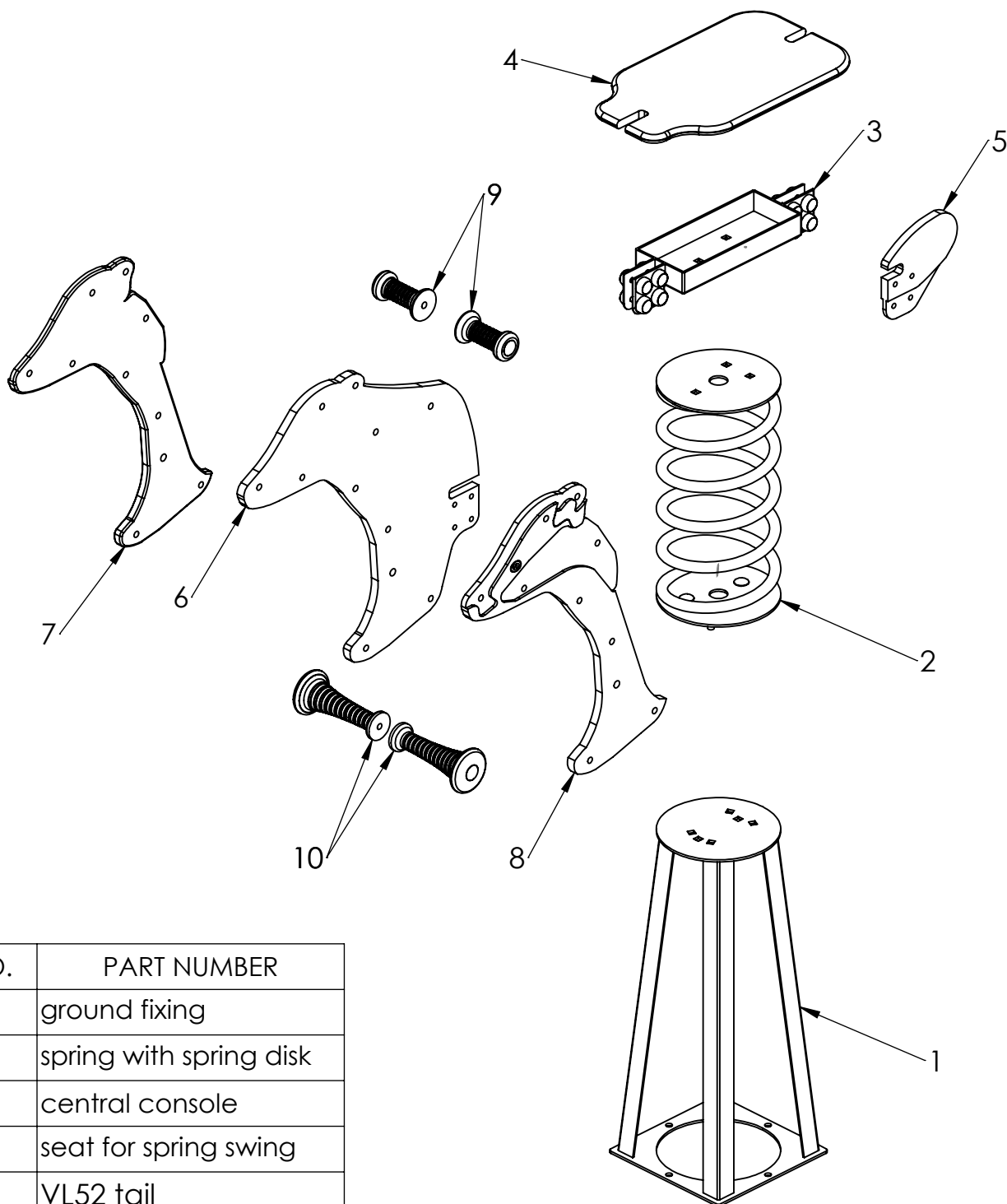
B

C

D

E

F



ITEM NO.	PART NUMBER
1	ground fixing
2	spring with spring disk
3	central console
4	seat for spring swing
5	VL52 tail
6	VL52 body panel
7	VL52 face panel 1
8	VL52 face panel 2
9	handle new
10	leg support n

UNLESS OTHERWISE SPECIFIED:  
DIMENSIONS ARE IN MILLIMETERS  
WEIGHT ARE IN KILOGRAMM

PART NUMBER / DWG NO.:

VL52

	NAME	SIGNATURE	DATE	REVISION
DRAWN	E.Reispere		01.11.2022	
APPV'D				

DESCRIPTION:

Spring swing BADGER

MATERIAL:

metal, plastic

A4

WEIGHT:

SCALE: 1:10

SHEET 5 OF 10



**Tiptiptap** OÜ

A

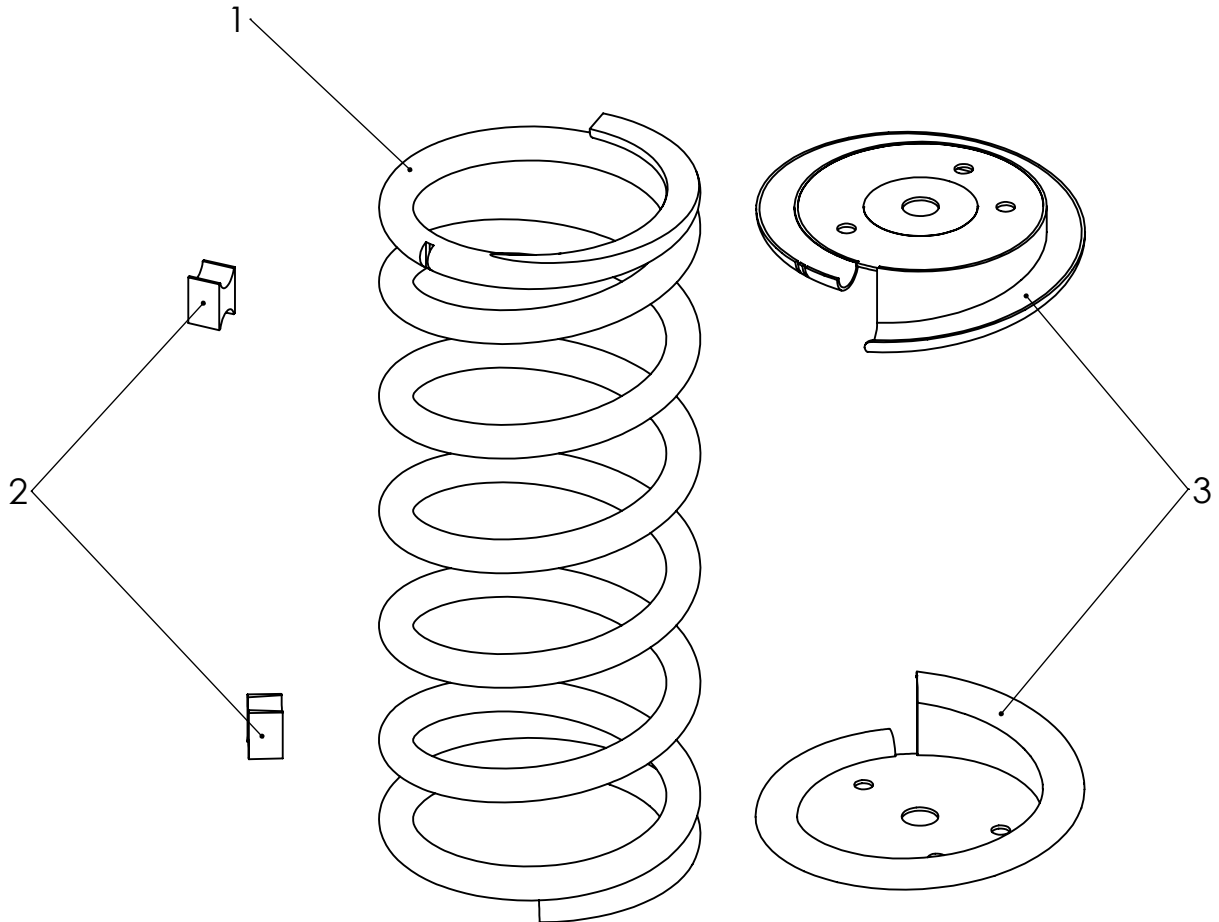
B

C

D

E

F



ITEM NO.	PART NUMBER	DESCRIPTION	QTY.
1	spring	painted steel	1
2	distance block	HP plastic	2
3	spring plate	painted steel	2

UNLESS OTHERWISE SPECIFIED:  
 DIMENSIONS ARE IN MILLIMETERS  
 WEIGHT ARE IN KILOGRAMM

PART NUMBER / DWG NO.:  
**VL52**

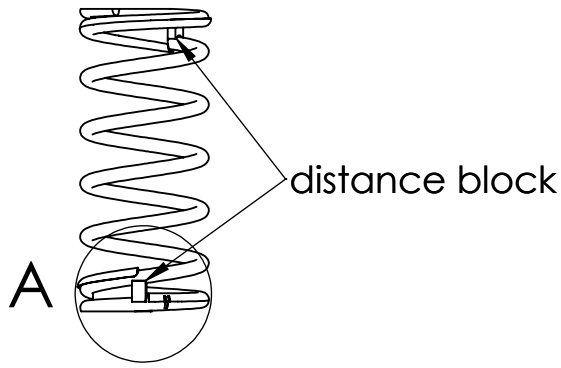
	NAME	SIGNATURE	DATE	REVISION
DRAWN	E.Reispere		01.11.2022	
APPV'D				

DESCRIPTION:  
**Spring swing BADGER**

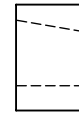
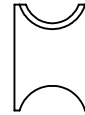
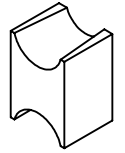


MATERIAL:	metal, plastic	A4
WEIGHT:		SCALE: 1:4
		SHEET 6 OF 10

A



view 1

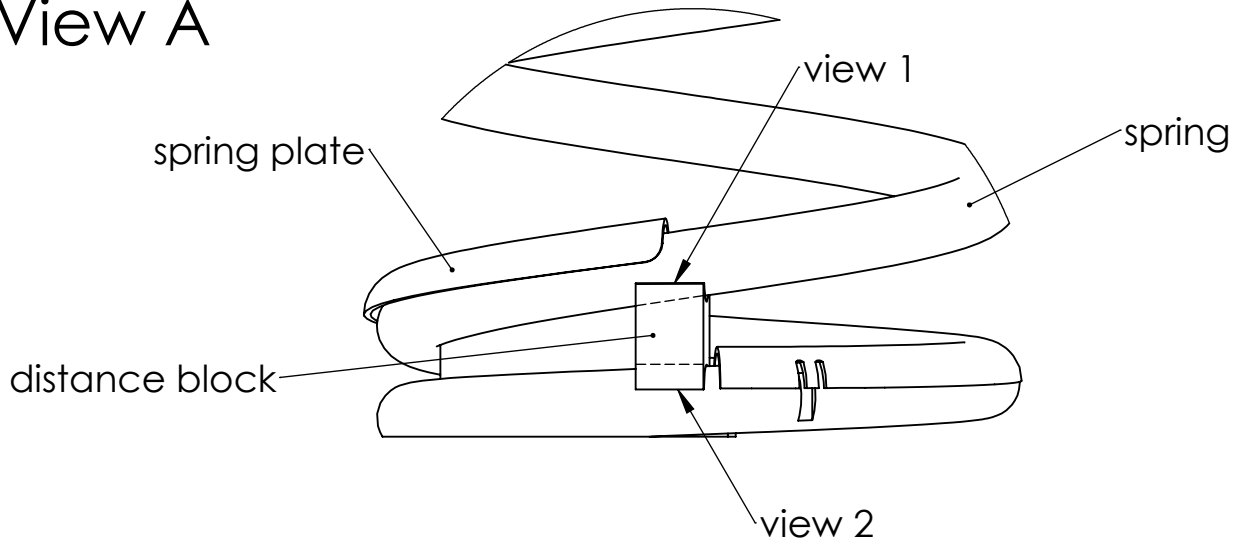


view 2

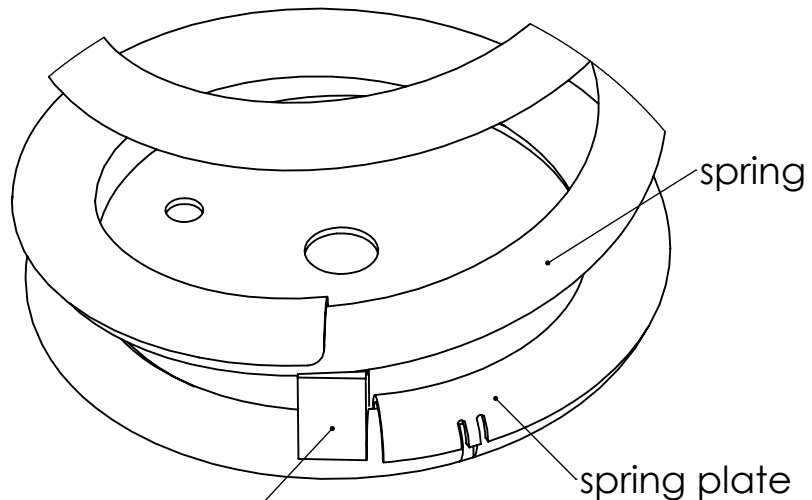
B

# View A

C



D



E

distance block

F

UNLESS OTHERWISE SPECIFIED:  
DIMENSIONS ARE IN MILLIMETERS  
WEIGHT ARE IN KILOGRAMM

PART NUMBER / DWG NO.:

VL52

	NAME	SIGNATURE	DATE	REVISION
DRAWN	E.Reispere		01.11.2022	
APPV'D				

DESCRIPTION:

Spring swing BADGER

MATERIAL:

metal, plastic

A4

WEIGHT:

SCALE: 1:4

SHEET 7 OF 10



# Tiptiptap<sup>00</sup>

A

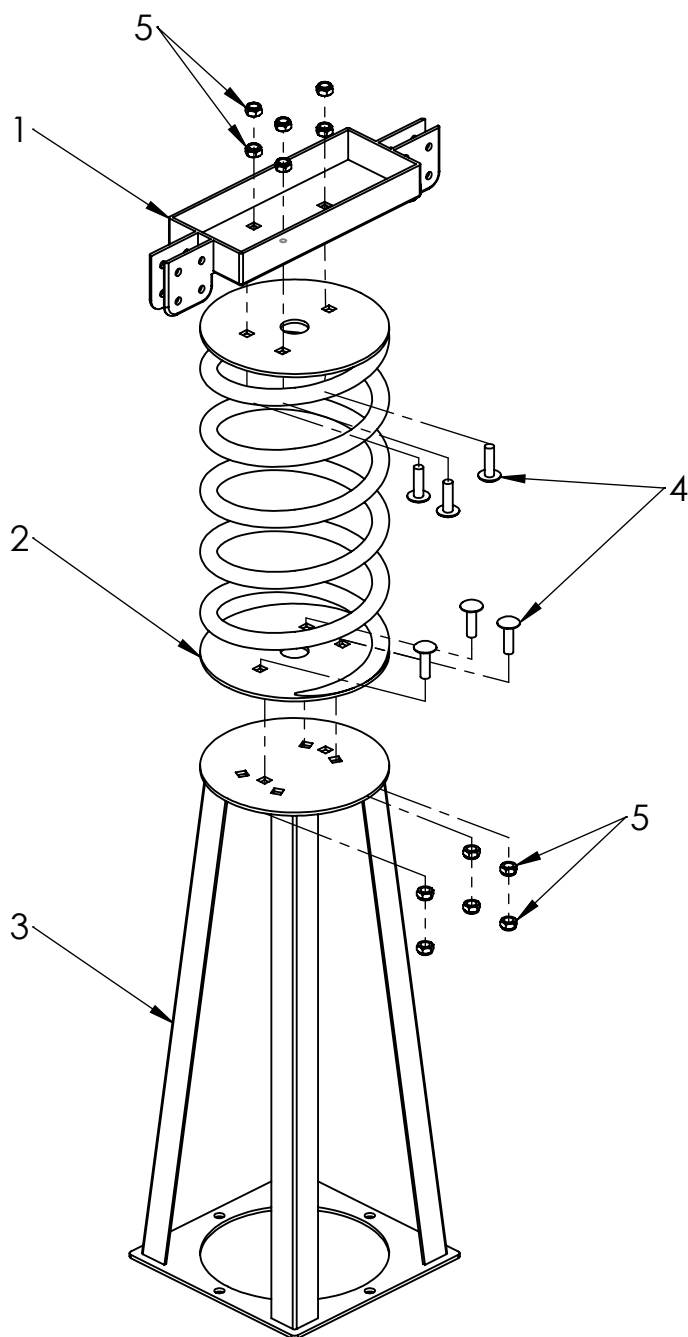
B

C

D

E

F



ITEM NO.	PART NUMBER
1	central console
2	spring with spring disk
3	ground fixing
4	bolt DIN603 M10x35
5	nut DIN985 M10

UNLESS OTHERWISE SPECIFIED:  
DIMENSIONS ARE IN MILLIMETERS  
WEIGHT ARE IN KILOGRAMM

PART NUMBER / DWG NO.:

VL52

	NAME	SIGNATURE	DATE	REVISION
DRAWN	E.Reispere		01.11.2022	
APPV'D				

DESCRIPTION:

Spring swing BADGER

MATERIAL:

metal, plastic

A4

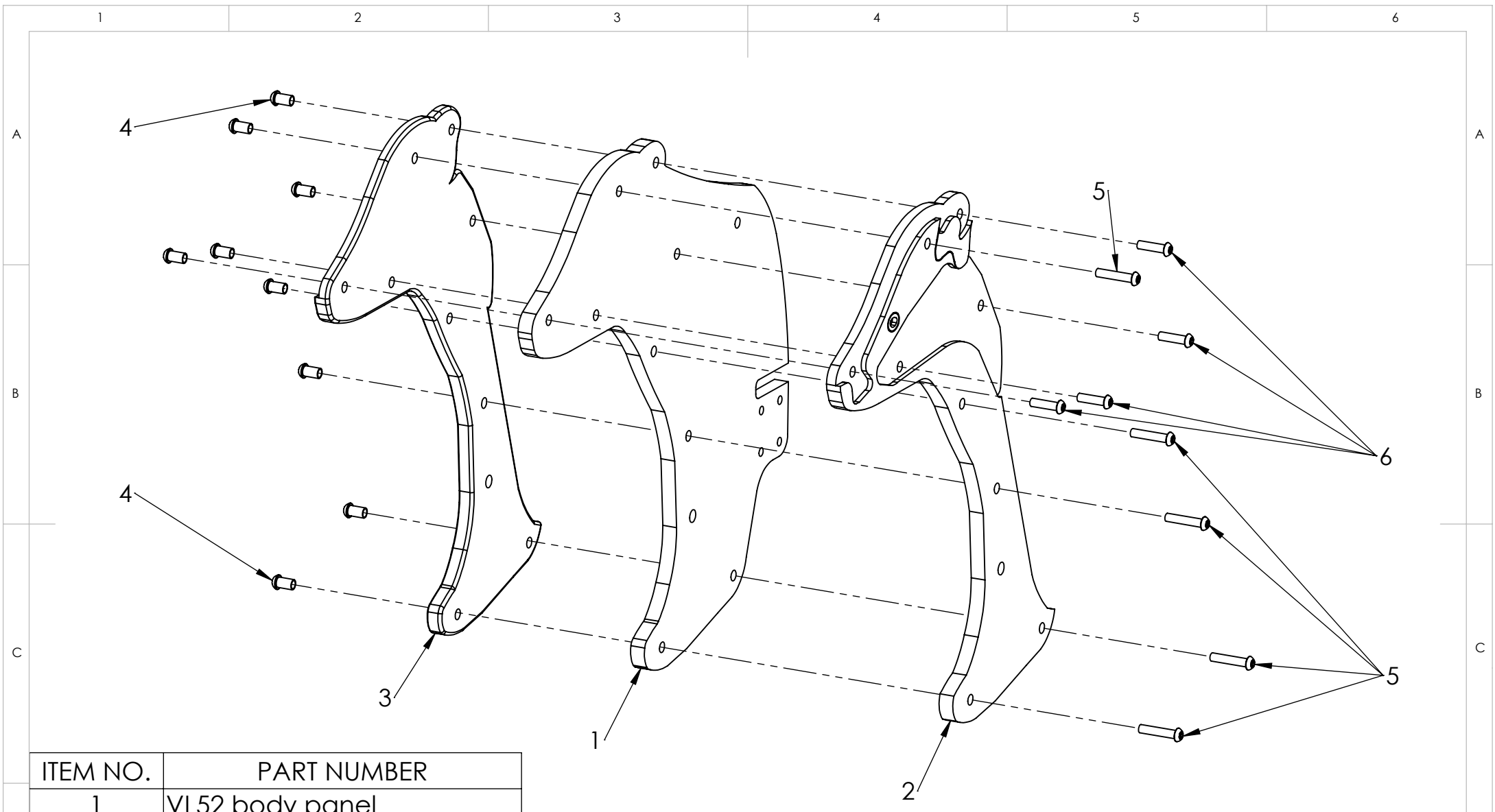
WEIGHT:

SCALE: 1:10

SHEET 8 OF 10



**Tiptiptap** <sup>OO</sup>



ITEM NO.	PART NUMBER
1	VL52 body panel
2	VL52 face panel 2
3	VL52 face panel 1
4	pin torx nut M18x16 DIN7380
5	bolt M8x40 pin tx Art.9121
6	bolt M8x30 pin tx Art.9121

UNLESS OTHERWISE SPECIFIED:  
 DIMENSIONS ARE IN MILLIMETERS  
 WEIGHT ARE IN KILOGRAMM

	NAME	SIGNATURE	DATE	REVISION
DRAWN	E.Reispere		01.11.2022	
APPV'D				

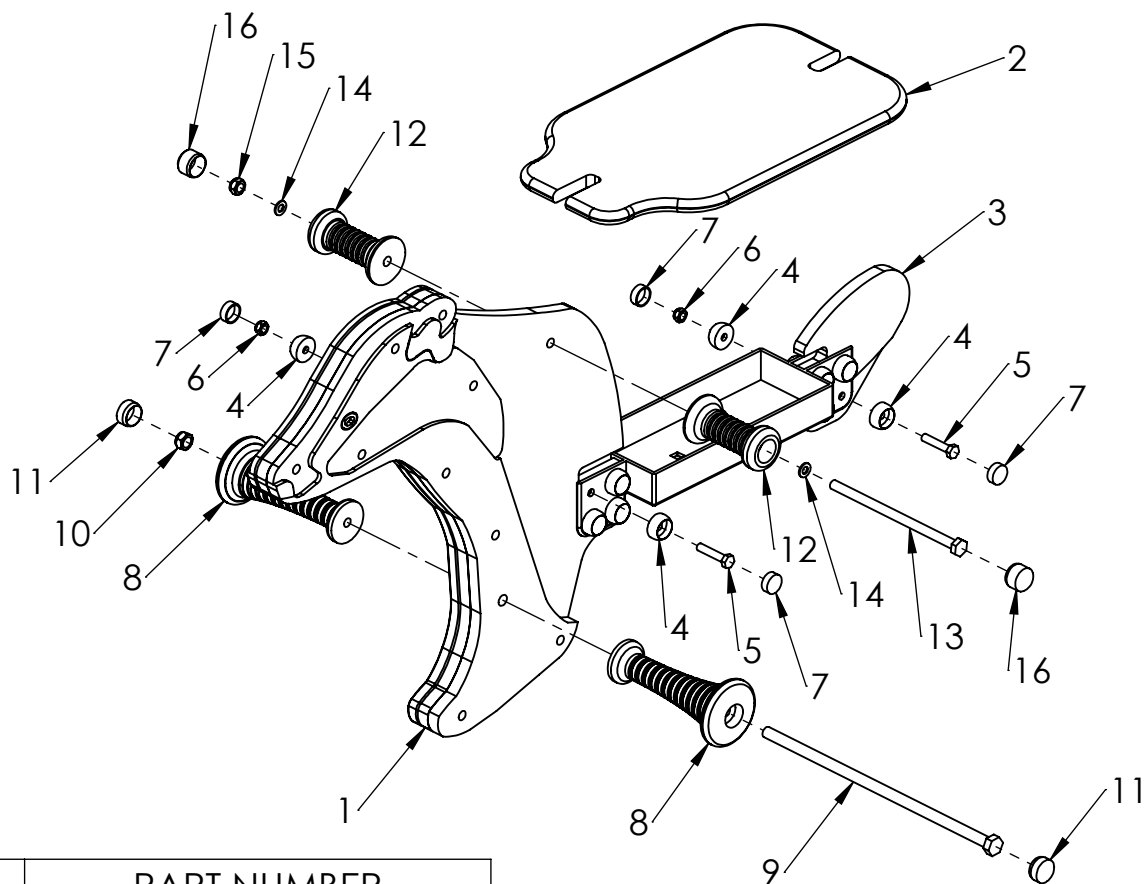


PART NUMBER / DWG NO.:		VL52	
DESCRIPTION:			
Spring swing BADGER			
MATERIAL:		metal, plastic	A4
WEIGHT:		SCALE: 1:20	SHEET 9 OF 10

A

B

C



ITEM NO.	PART NUMBER
1	VL52 body panel
2	seat for spring swing
3	VL52 tail
4	nut cover M8
5	bolt DIN933 M8x40
6	nut DIN985 M8
7	nut cover cap M8
8	leg support n
9	bolt M12x335 DIN931
10	nut DIN985 M12
11	leg support n cover cup
12	handle new
13	bolt M10x185 DIN931
14	washer M8 DIN125
15	nut DIN985 M10
16	handle new cup

D

E

F

UNLESS OTHERWISE SPECIFIED:  
DIMENSIONS ARE IN MILLIMETERS  
WEIGHT ARE IN KILOGRAMM

	NAME	SIGNATURE	DATE	REVISION
DRAWN	E.Reispere		01.11.2022	
APPV'D				

PART NUMBER / DWG NO.:

VL52

DESCRIPTION:

Spring swing BADGER

MATERIAL:

metal, plastic

A4

WEIGHT:

SCALE: 1:20

SHEET 10 OF 10



**Tiptiptap** OÜ