

A

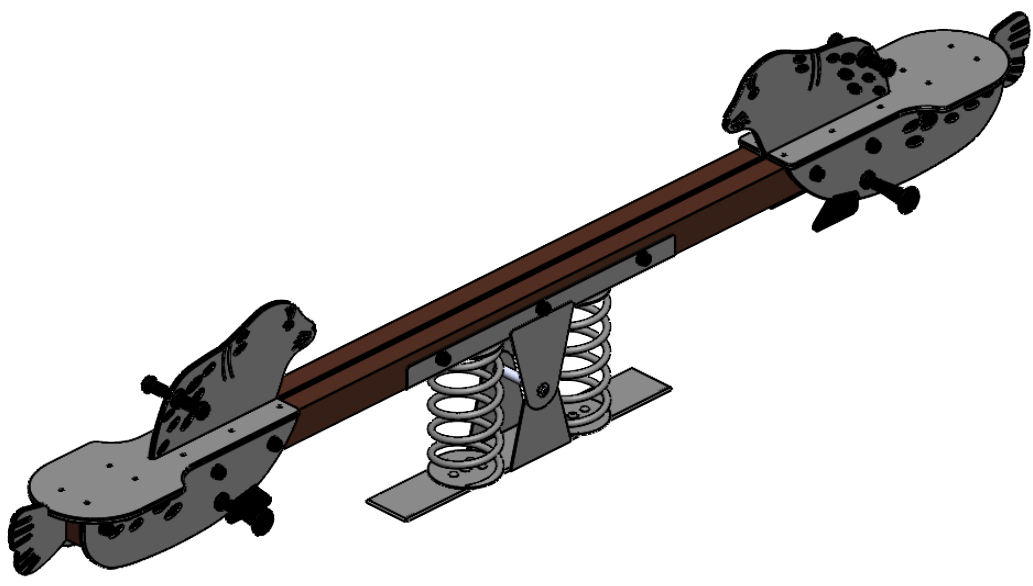
B

C

D

E

F



UNLESS OTHERWISE SPECIFIED:
 DIMENSIONS ARE IN MILLIMETERS
 WEIGHT ARE IN KILOGRAMM

PART NUMBER / DWG NO.:
 KK1

	NAME	SIGNATURE	DATE	REVISION
DRAWN	E.Reispere		10.08.2023	
APPV'D				

DESCRIPTION:
 See-saw SEAL



MATERIAL:	wood, metal, plastic	A4
WEIGHT:	SCALE: 1:50	SHEET 1 OF 12

safety area

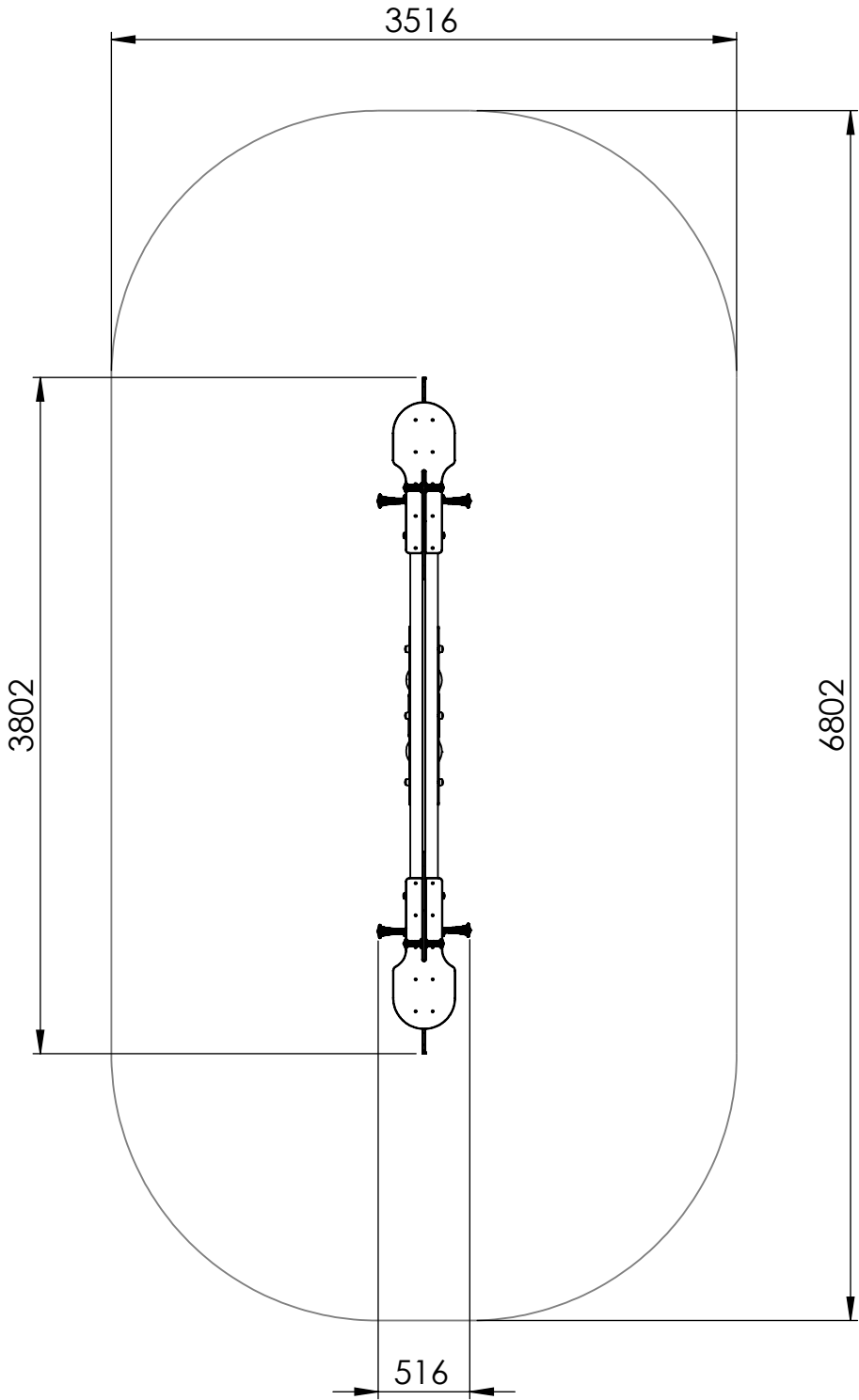
A

B

C

D

E



safety area: 21,97 m²

UNLESS OTHERWISE SPECIFIED:
DIMENSIONS ARE IN MILLIMETERS
WEIGHT ARE IN KILOGRAMM

PART NUMBER / DWG NO.:

KK1

	NAME	SIGNATURE	DATE	REVISION
DRAWN	E.Reispere		10.08.2023	
APPV'D				

DESCRIPTION:

See-saw SEAL

F



Tiptiptap⁰⁰

MATERIAL:

wood, metal, plastic

A4

WEIGHT:

SCALE: 1:50

SHEET 2 OF 12

foundation

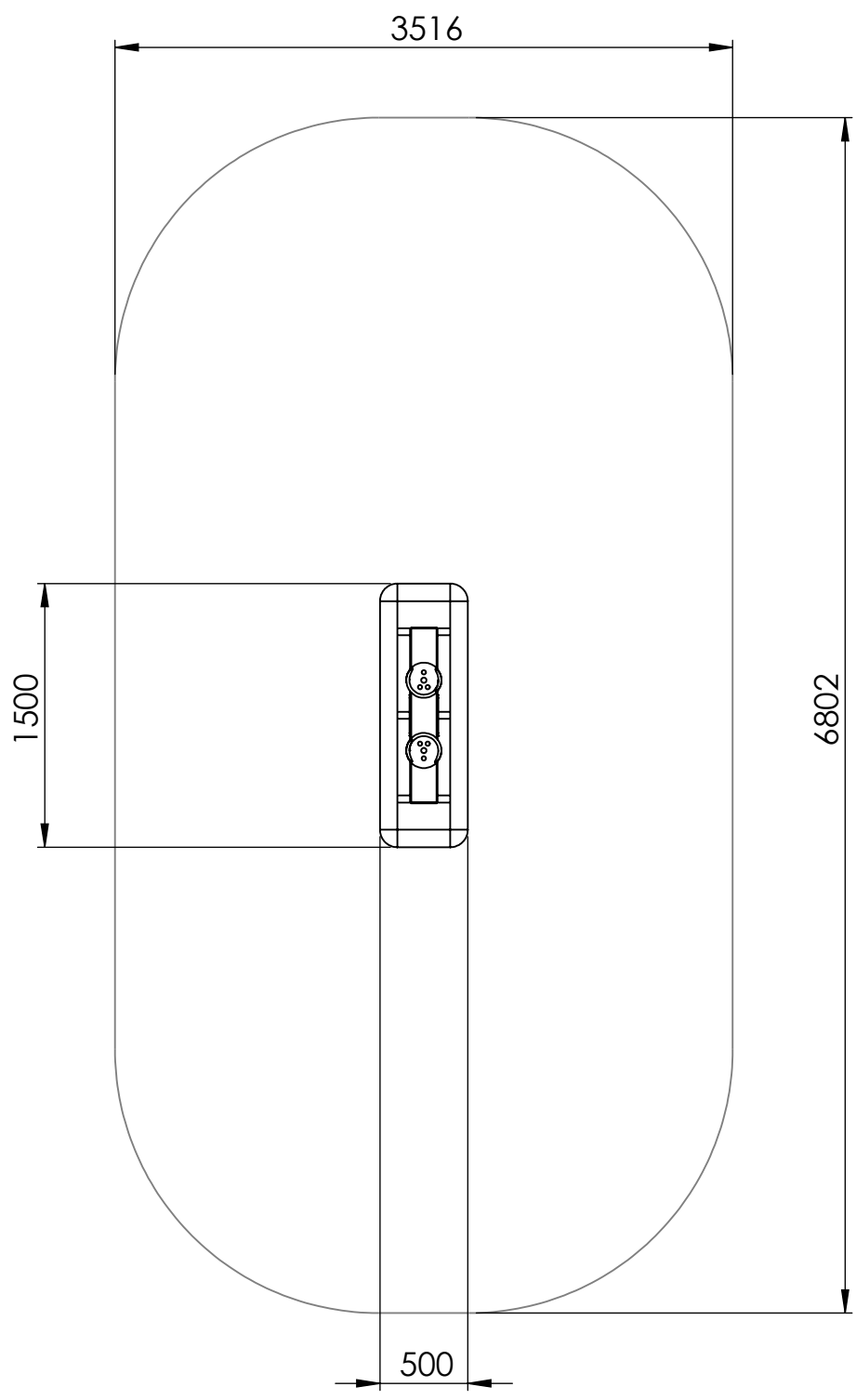
A

B

C

D

E



UNLESS OTHERWISE SPECIFIED:
 DIMENSIONS ARE IN MILLIMETERS
 WEIGHT ARE IN KILOGRAMM

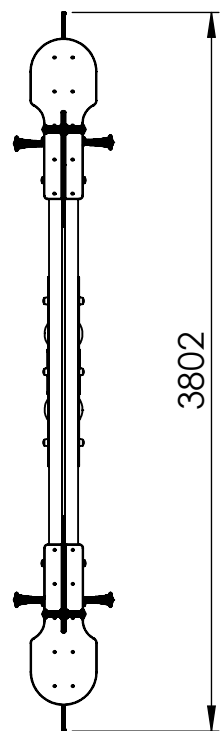
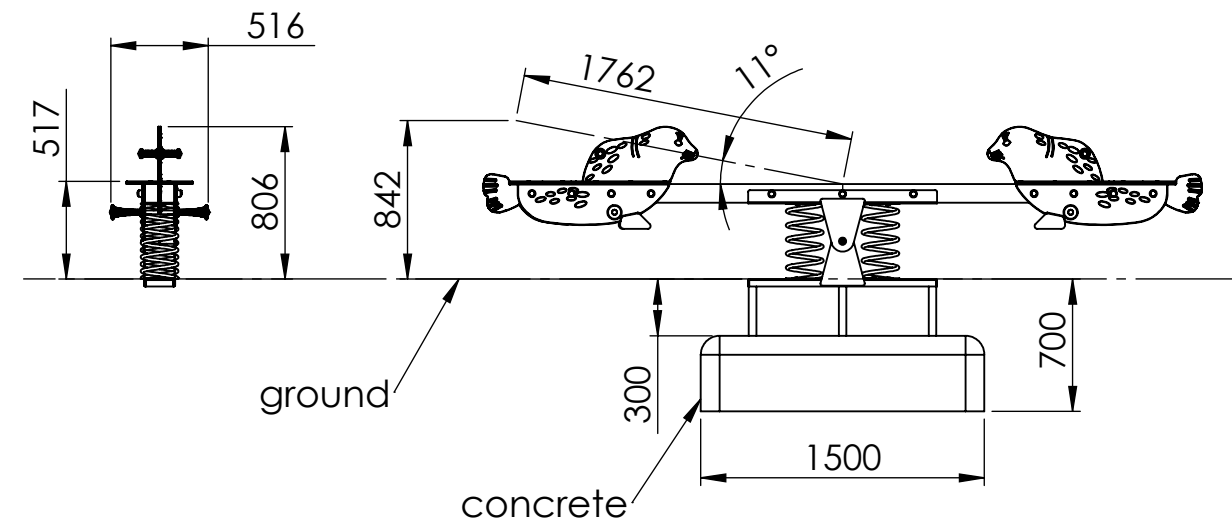
PART NUMBER / DWG NO.:
KK1

	NAME	SIGNATURE	DATE	REVISION
DRAWN	E.Reispere		10.08.2023	
APPV'D				

DESCRIPTION:
See-saw SEAL



MATERIAL:	wood, metal, plastic	A4
WEIGHT:		SCALE: 1:50
		SHEET 3 OF 12



UNLESS OTHERWISE SPECIFIED:
DIMENSIONS ARE IN MILLIMETERS
WEIGHT ARE IN KILOGRAMM

PART NUMBER / DWG NO.:
KK1

	NAME	SIGNATURE	DATE	REVISION
DRAWN	E.Reispere		10.08.2023	
APPV'D				

DESCRIPTION:
See-saw SEAL



MATERIAL:	wood, metal, plastic	A4
WEIGHT:		SCALE: 1:40
		SHEET 4 OF 12

A

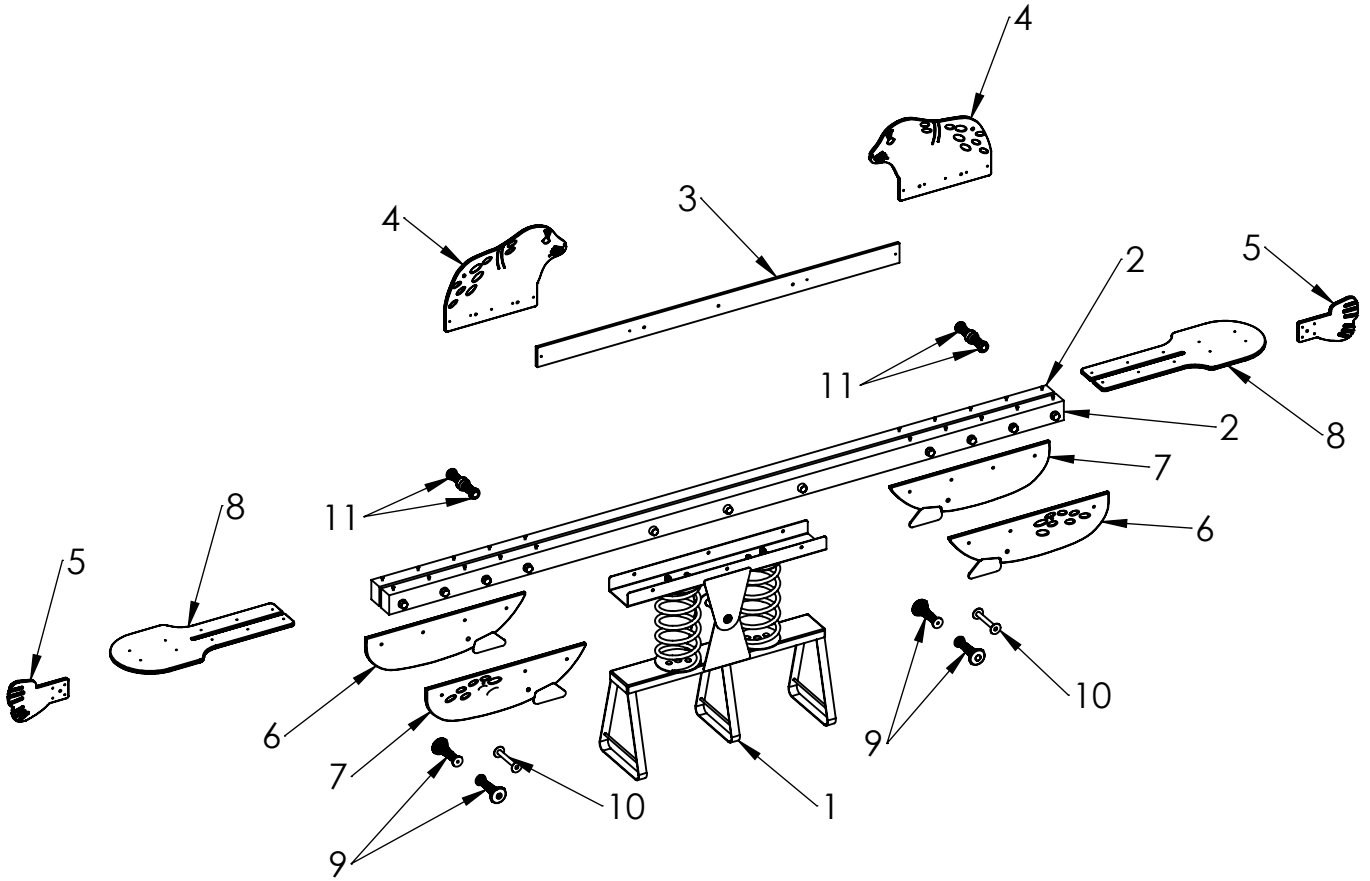
B

C

D

E

F



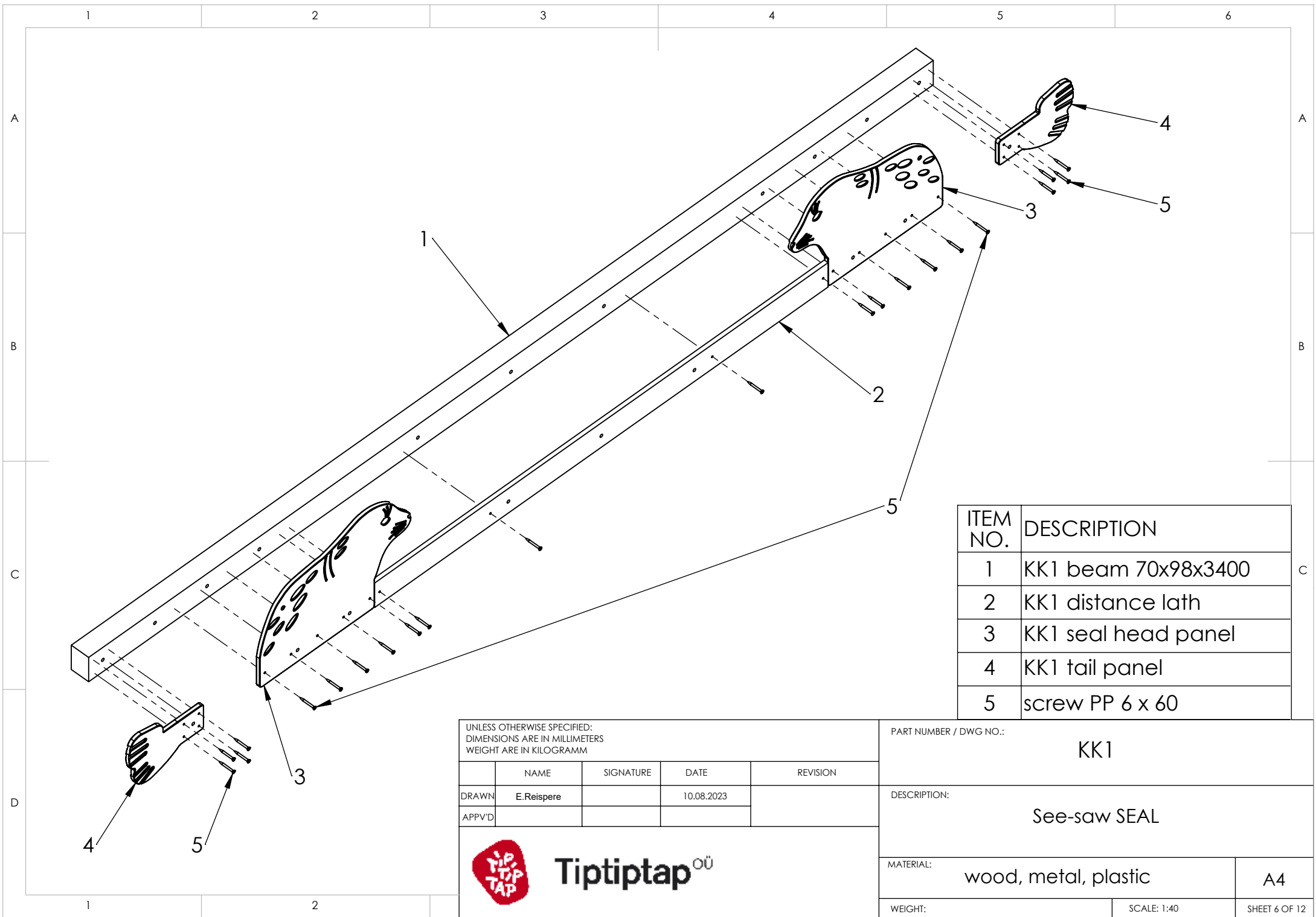
ITEM NO.	DESCRIPTION
1	K102 ground fixing
2	KK1 beam 70x98x3400
3	KK1 distance lath
4	KK1 seal head panel
5	KK1 tail panel
6	KK1 seal side panel 1
7	KK1 seal side panel 2
8	KK1 seal seat panel
9	leg support n
10	distance tube for leg support
11	handle n

UNLESS OTHERWISE SPECIFIED: DIMENSIONS ARE IN MILLIMETERS WEIGHT ARE IN KILOGRAMM				
	NAME	SIGNATURE	DATE	REVISION
DRAWN	E.Reispere		10.08.2023	
APPV'D				

PART NUMBER / DWG NO.:	KK1
DESCRIPTION:	See-saw SEAL



MATERIAL:	wood, metal, plastic	A4
WEIGHT:		SCALE: 1:40
		SHEET 5 OF 12



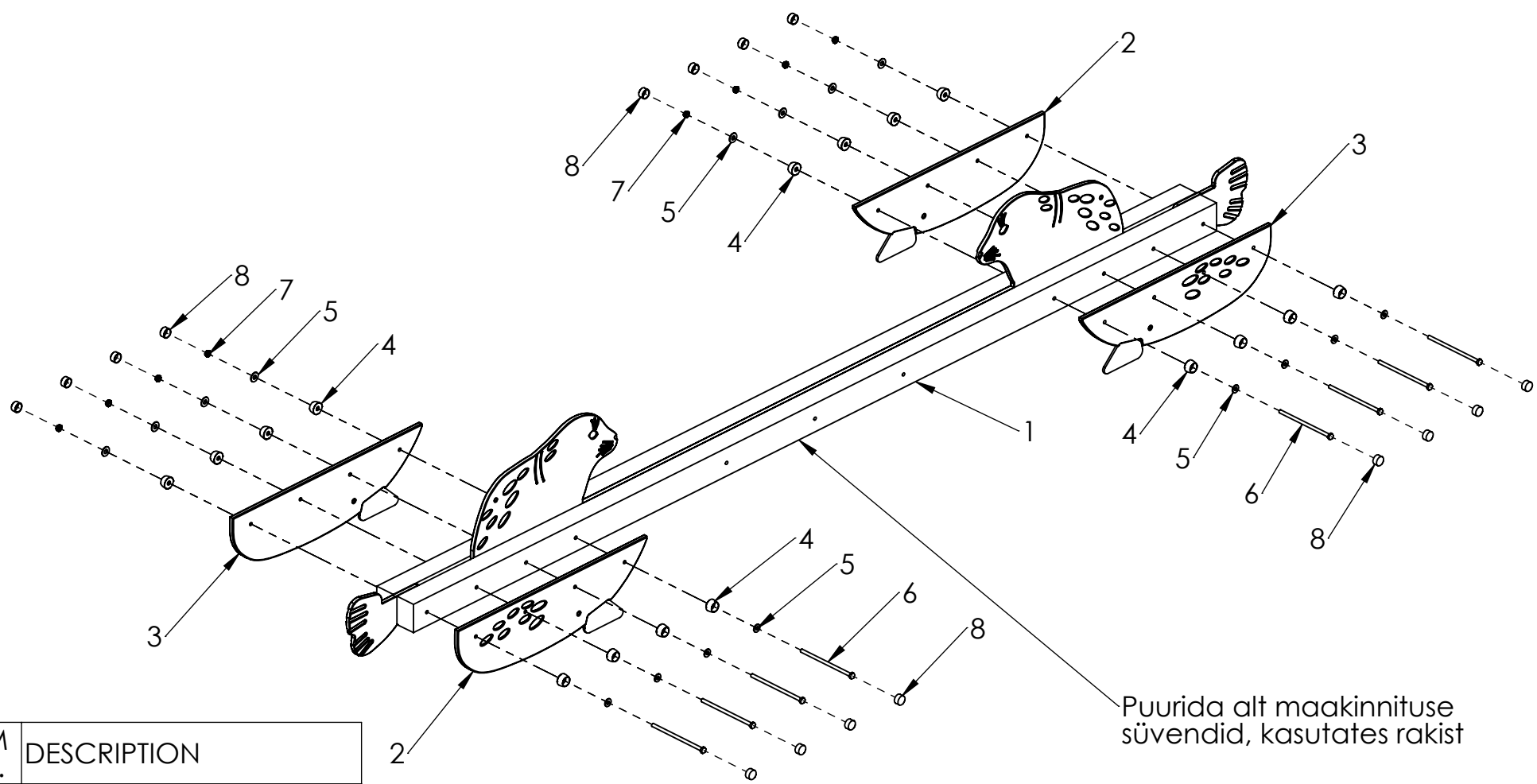
ITEM NO.	DESCRIPTION
1	KK1 beam 70x98x3400
2	KK1 distance lath
3	KK1 seal head panel
4	KK1 tail panel
5	screw PP 6 x 60

UNLESS OTHERWISE SPECIFIED:
 DIMENSIONS ARE IN MILLIMETERS
 WEIGHT ARE IN KILOGRAMM

	NAME	SIGNATURE	DATE	REVISION
DRAWN	E.Reispere		10.08.2023	
APPV'D				



PART NUMBER / DWG NO.:		KK1	
DESCRIPTION:			
		See-saw SEAL	
MATERIAL:		wood, metal, plastic	A4
WEIGHT:		SCALE: 1:40	SHEET 6 OF 12



Puurida alt maakinnituse süvendid, kasutates rakist

ITEM NO.	DESCRIPTION
1	KK1 beam 70x98x3400
2	KK1 seal side panel 1
3	KK1 seal side panel 2
4	nut cover M12
5	washer M10 DIN9054
6	bolt M10x210 DIN931
7	nut M10 DIN985
8	nut cover cap M12

UNLESS OTHERWISE SPECIFIED:
DIMENSIONS ARE IN MILLIMETERS
WEIGHT ARE IN KILOGRAMM

	NAME	SIGNATURE	DATE	REVISION
DRAWN	E.Reispere		10.08.2023	
APPV'D				



PART NUMBER / DWG NO.: KK1	
DESCRIPTION: See-saw SEAL	
MATERIAL: wood, metal, plastic	A4
WEIGHT:	SCALE: 1:40 SHEET 7 OF 12

A

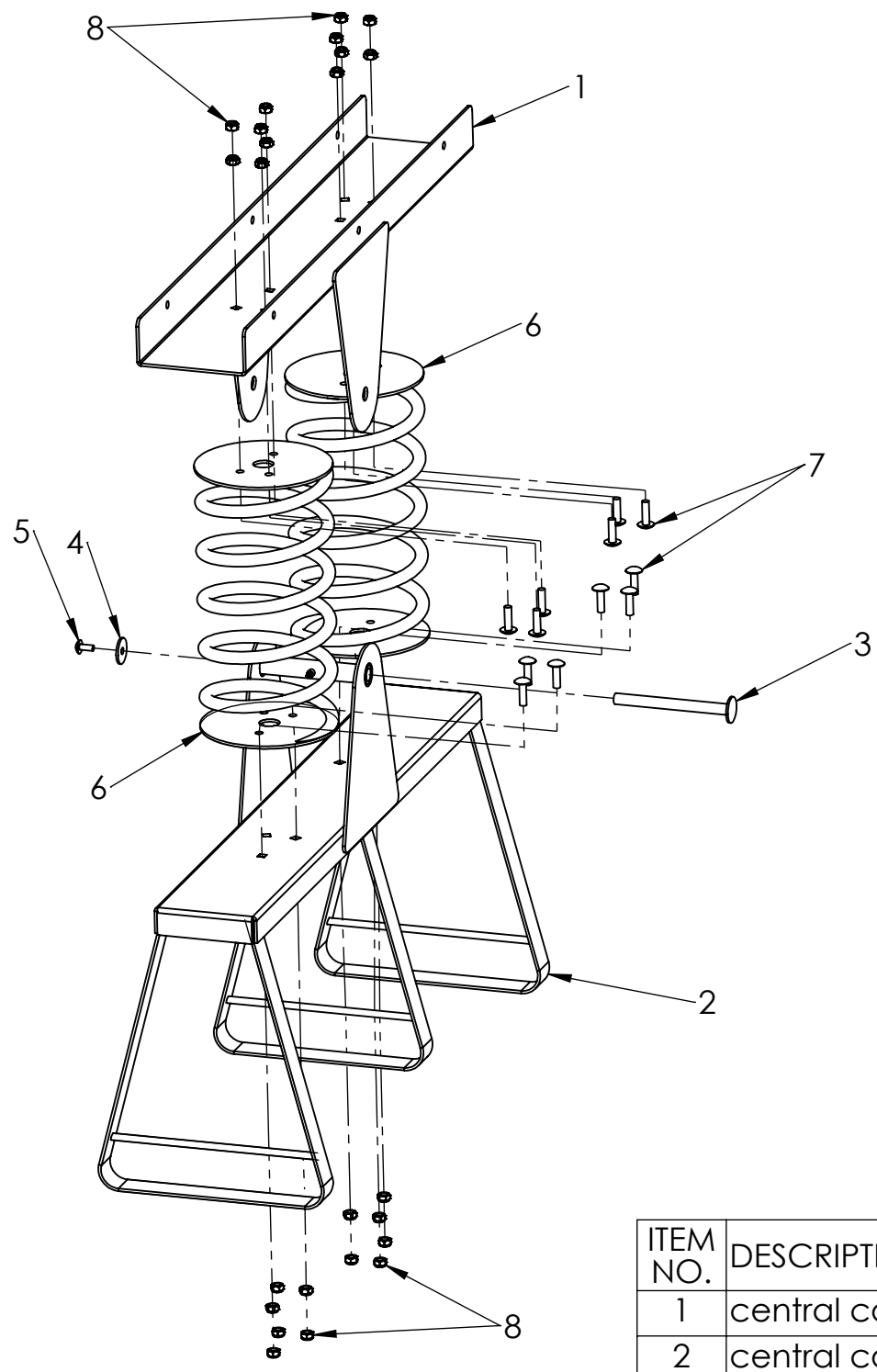
B

C

D

E

F



ITEM NO.	DESCRIPTION
1	central console upper part
2	central console ground fixing
3	central console shaft
4	central console shaft washer
5	central console shaft bolt
6	spring with spring disk
7	bolt M10x35 DIN603
8	nut M10 DIN985

UNLESS OTHERWISE SPECIFIED: DIMENSIONS ARE IN MILLIMETERS WEIGHT ARE IN KILOGRAMM				
	NAME	SIGNATURE	DATE	REVISION
DRAWN	E.Reispere		10.08.2023	
APPV'D				

PART NUMBER / DWG NO.:	KK1		
DESCRIPTION:	See-saw SEAL		



MATERIAL:	wood, metal, plastic	A4
WEIGHT:	SCALE: 1:20	SHEET 8 OF 12

A

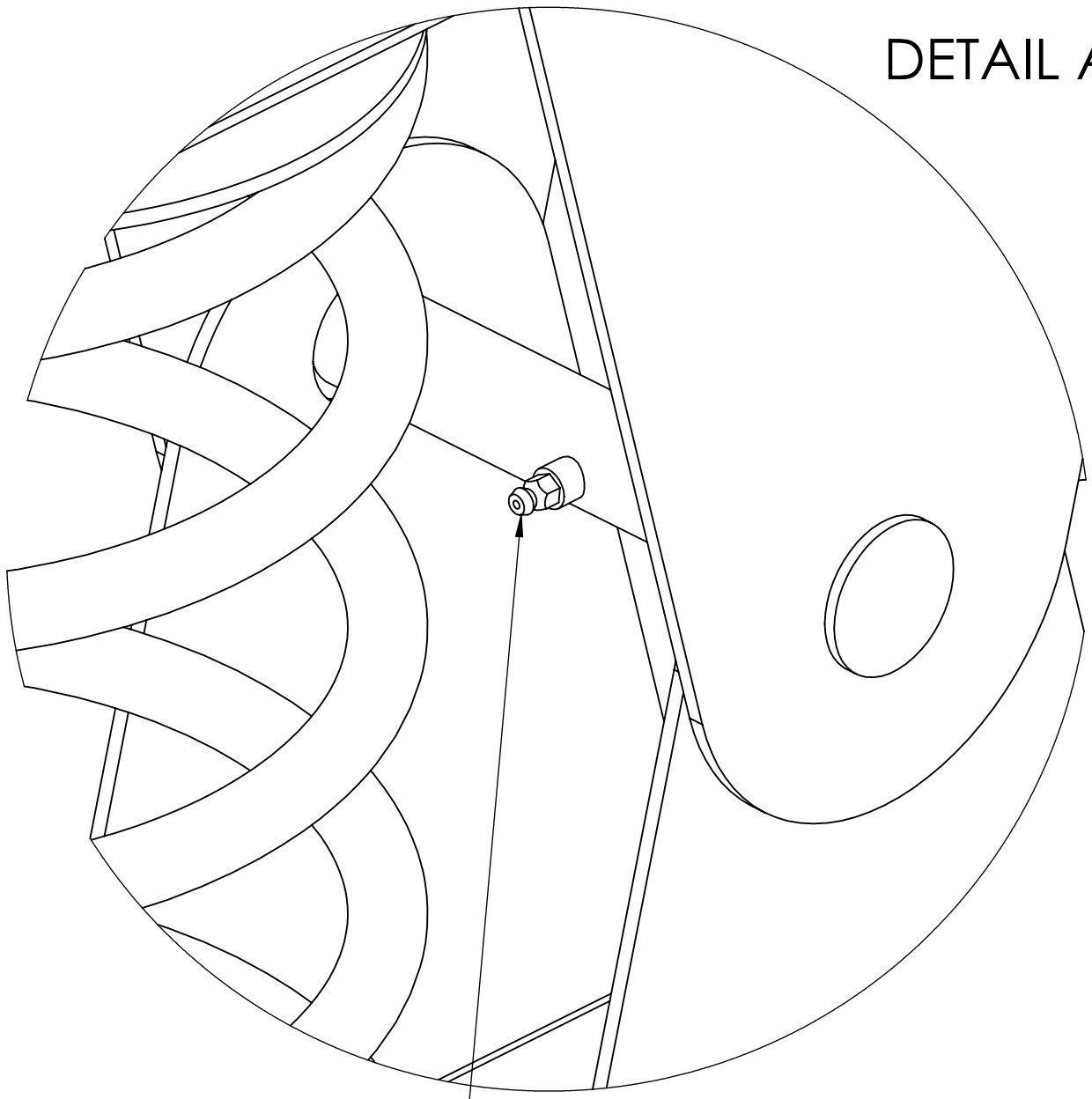
DETAIL A

B

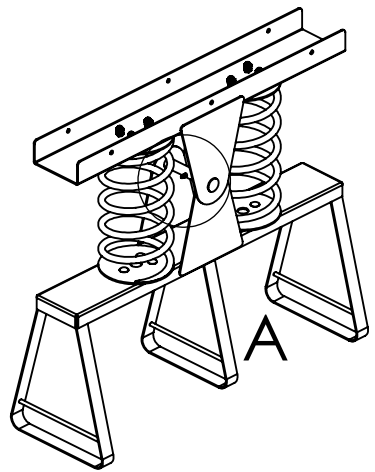
C

D

E



grease nipple



A

UNLESS OTHERWISE SPECIFIED:
 DIMENSIONS ARE IN MILLIMETERS
 WEIGHT ARE IN KILOGRAMM

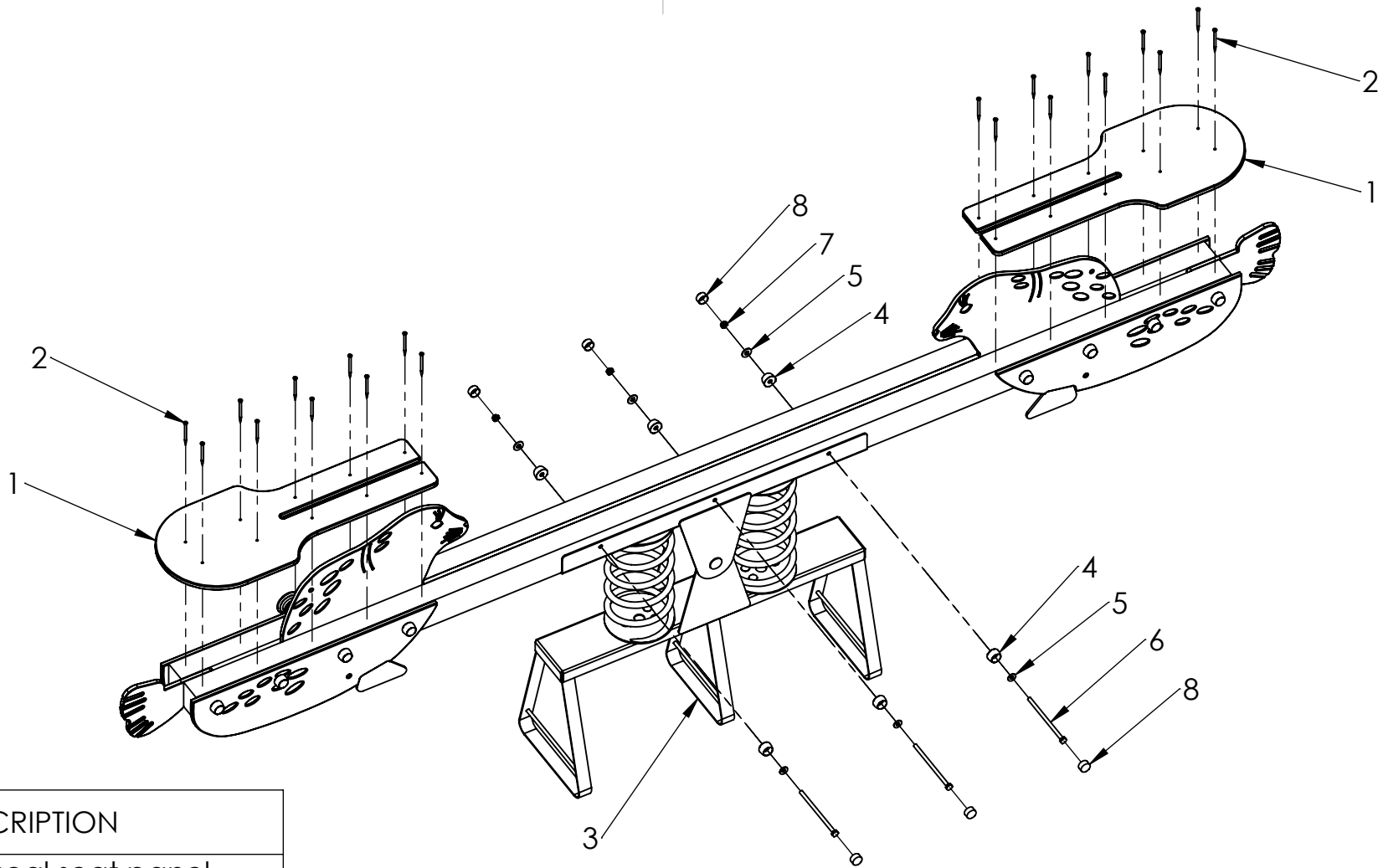
PART NUMBER / DWG NO.:
 KK1

	NAME	SIGNATURE	DATE	REVISION
DRAWN	E.Reispere		10.08.2023	
APPV'D				

DESCRIPTION:
 See-saw SEAL



MATERIAL:	wood, metal, plastic	A4
WEIGHT:		SCALE: 1:20
		SHEET 9 OF 12



ITEM NO.	DESCRIPTION
1	KK1 seal seat panel
2	screw PP 6 x 90
3	K102 ground fixing
4	nut cover M12
5	washer M10 DIN9054
6	bolt M10x190 DIN931
7	nut M10 DIN985
8	nut cover cap M12

UNLESS OTHERWISE SPECIFIED:
DIMENSIONS ARE IN MILLIMETERS
WEIGHT ARE IN KILOGRAMM

	NAME	SIGNATURE	DATE	REVISION
DRAWN	E.Reispere		10.08.2023	
APPV'D				



Tiptap OÜ

PART NUMBER / DWG NO.:

KK1

DESCRIPTION:

See-saw SEAL

MATERIAL:

wood, metal, plastic

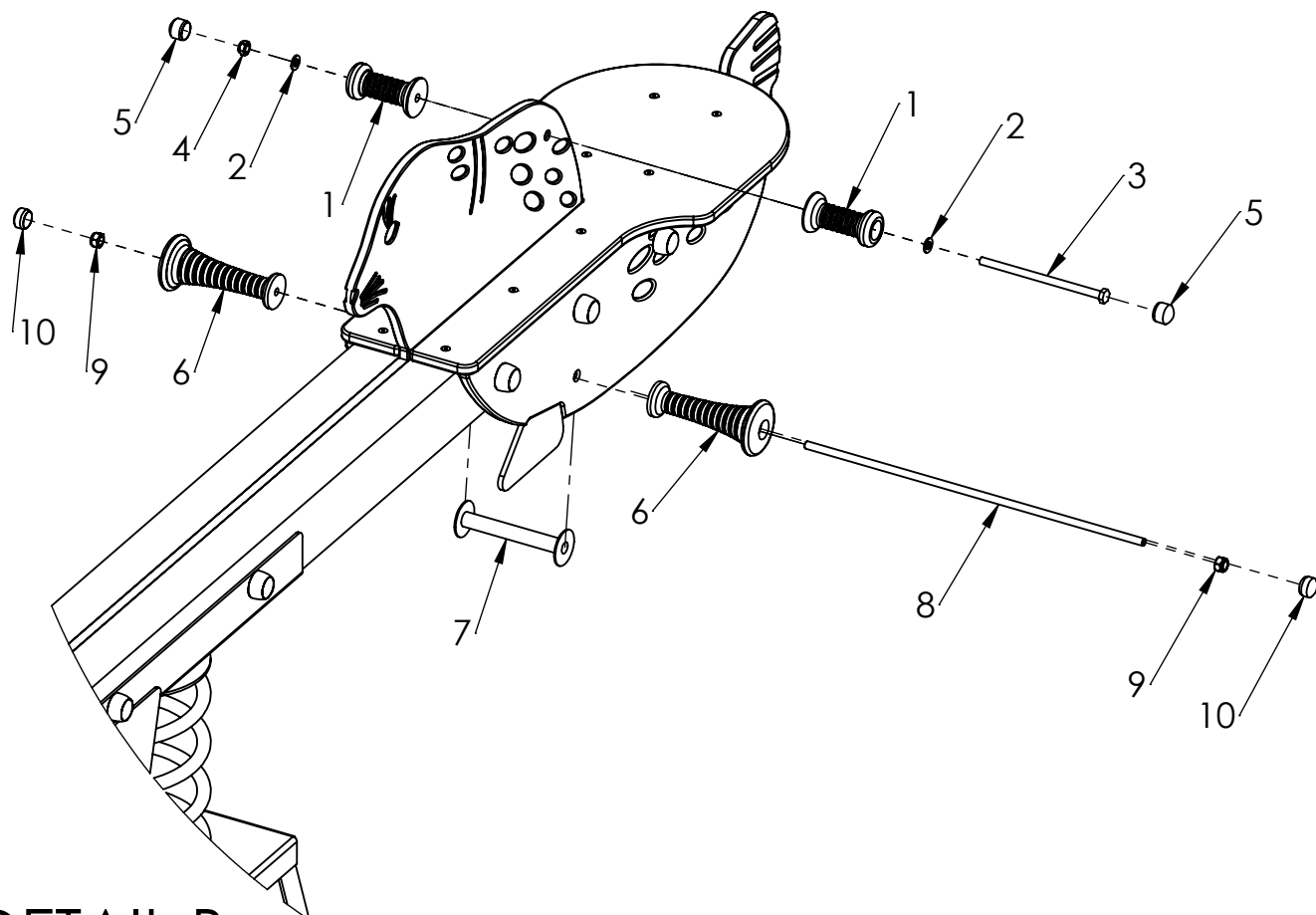
A4

WEIGHT:

SCALE: 1:20

SHEET 10 OF 12

A

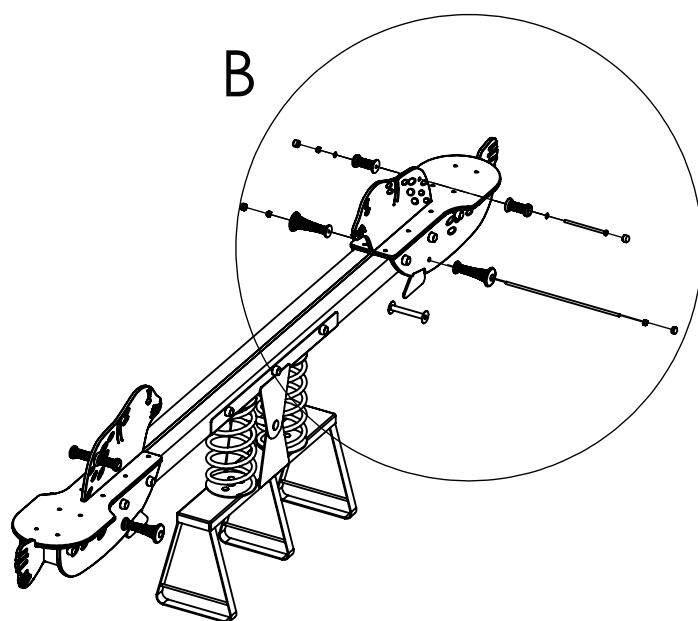


B

C

DETAIL B

D



E

ITEM NO.	DESCRIPTION
1	handle n
2	washer M10 DIN125
3	bolt M10x185 DIN931
4	nut M10 DIN985
5	handle new cup
6	leg support n
7	distance tube for leg support
8	thread bar M12x480
9	nut M12 DIN985
10	leg support n cover cup

UNLESS OTHERWISE SPECIFIED:
DIMENSIONS ARE IN MILLIMETERS
WEIGHT ARE IN KILOGRAMM

PART NUMBER / DWG NO.:

KK1

	NAME	SIGNATURE	DATE	REVISION
DRAWN	E.Reispere		10.08.2023	
APPV'D				

DESCRIPTION:

See-saw SEAL

F



Tiptiptap OÜ

MATERIAL:

wood, metal, plastic

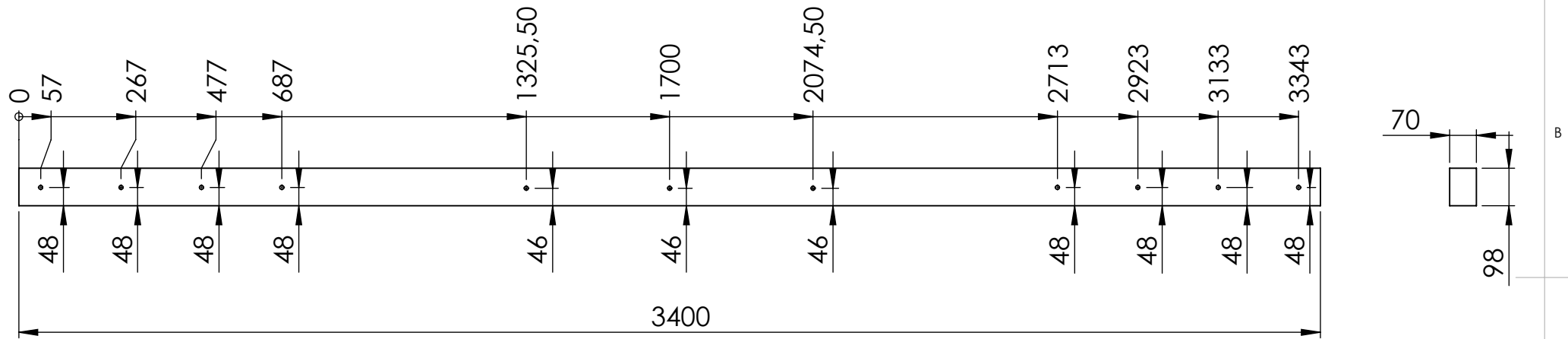
A4


WEIGHT:

SCALE: 1:20

SHEET 11 OF 12

KK1 (Hüljes) kiigetala 70x98x3400 (2tk), augud 10,5mm, läbivivad



UNLESS OTHERWISE SPECIFIED: DIMENSIONS ARE IN MILLIMETERS WEIGHT ARE IN KILOGRAMM					PART NUMBER / DWG NO.: KK1	
	NAME	SIGNATURE	DATE	REVISION	DESCRIPTION: See-saw SEAL	
DRAWN	E.Reispere		10.08.2023			
APPV'D						
 Tiptap OÜ					MATERIAL:	wood, metal, plastic
					WEIGHT:	