
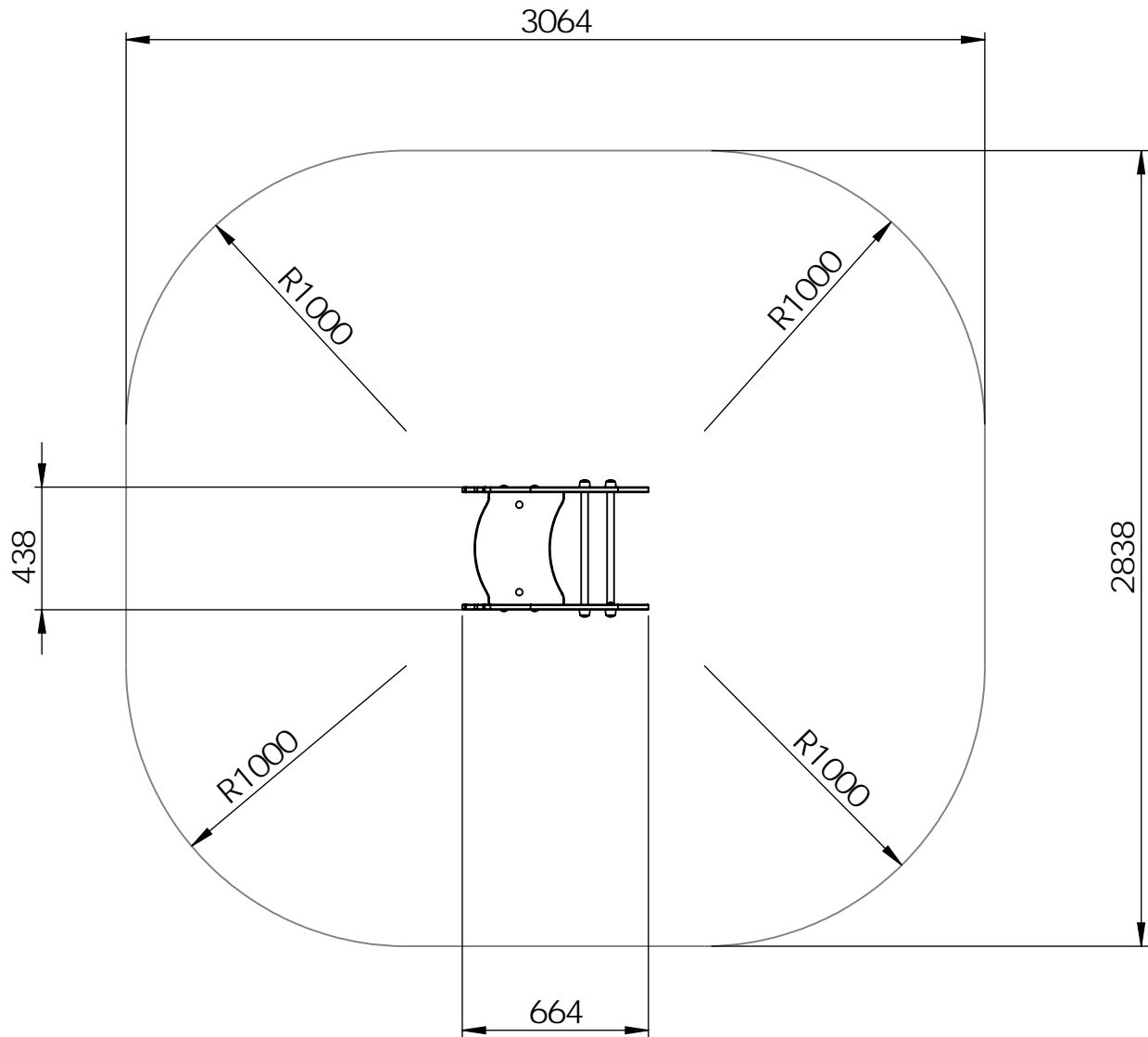




F	UNLESS OTHERWISE SPECIFIED: DIMENSIONS ARE IN MILLIMETERS WEIGHT ARE IN KILOGRAMM			Product code: VL038	
		NAME	SIGNATURE	DATE	DESCRIPTION: Spring swing CORA
	DRAWN	K.Männik		7/24/2025	
	 Tiptiptap OÜ				A 4
				WEIGHT:	SCALE: 1:10
					SHEET 1 OF 10

Sa fe ty a re a



UNLESS OTHERWISE SPECIFIED:
DIMENSIONS ARE IN MILLIMETERS
WEIGHT ARE IN KILOGRAMM

Product code:

VL038

DRAWN

NAME
K.Männik

SIG NATURE

DATE

7/24/2025

DESCRIPTION:

Spring swing CORA



Tiptiptap^{öö}

WEIGHT:

SCALE: 1:25

A 4

SHEET 2 OF 10

Founda tion

A

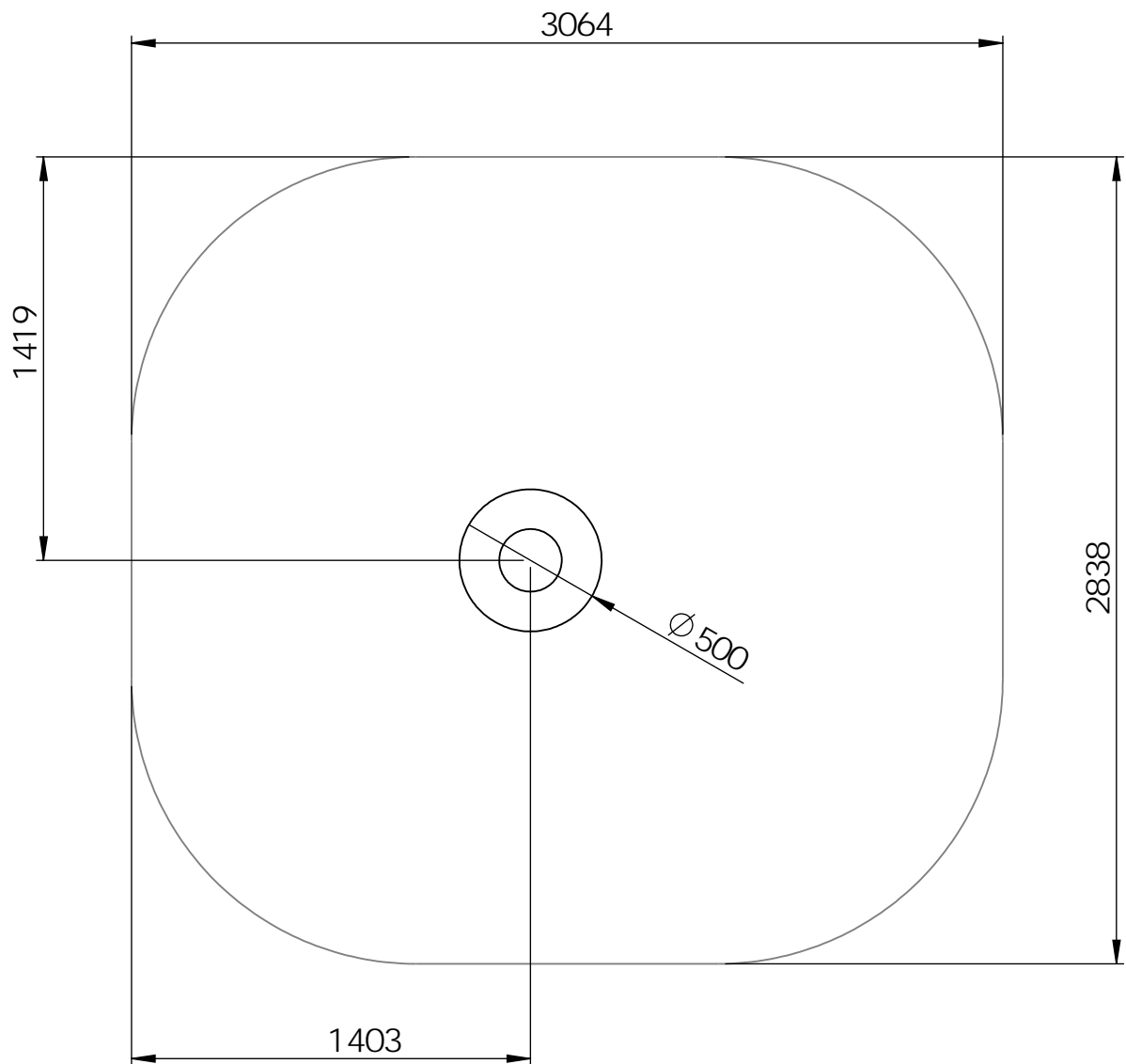
B

C

D

E

F



UNLESS OTHERWISE SPECIFIED:
DIMENSIONS ARE IN MILLIMETERS
WEIGHT ARE IN KILOGRAMM

Product code:

VL038

DRAWN

NAME
K.Männik

SIGNATURE

DATE

7/24/2025

DESCRIPTION:

Spring swing CORA

Tiptiptap^{OO}

WEIGHT:

SCALE: 1:25

A 4

SHEET 3 OF 10

A

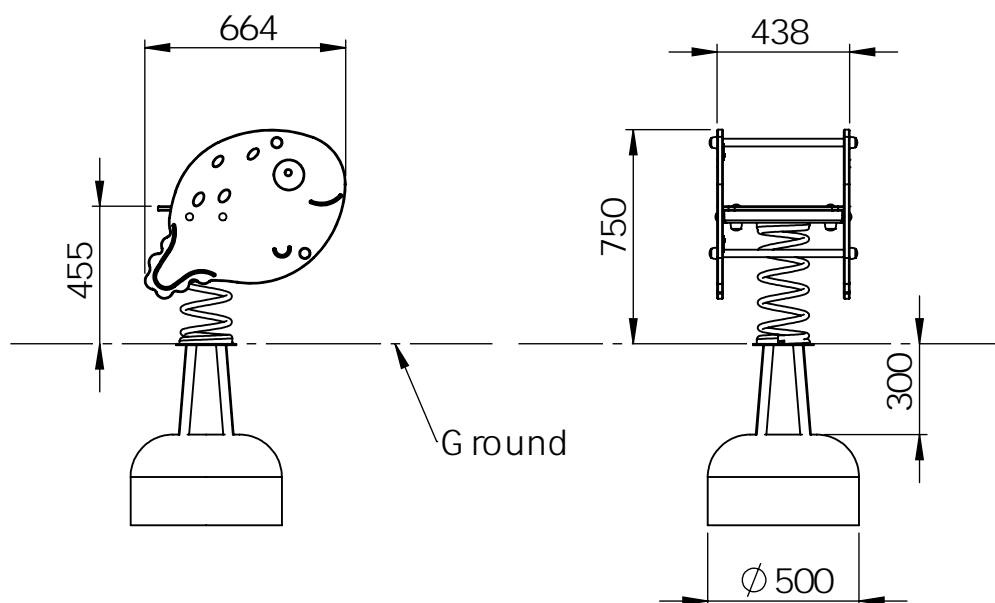
B

C

D

E

F



UNLESS OTHERWISE SPECIFIED:
DIMENSIONS ARE IN MILLIMETERS
WEIGHT ARE IN KILOGRAMM

Product code:

VL038

DRAWN

NAME
K.Männik

SIGNATURE

DATE

7/24/2025

DESCRIPTION:

Spring swing CORA

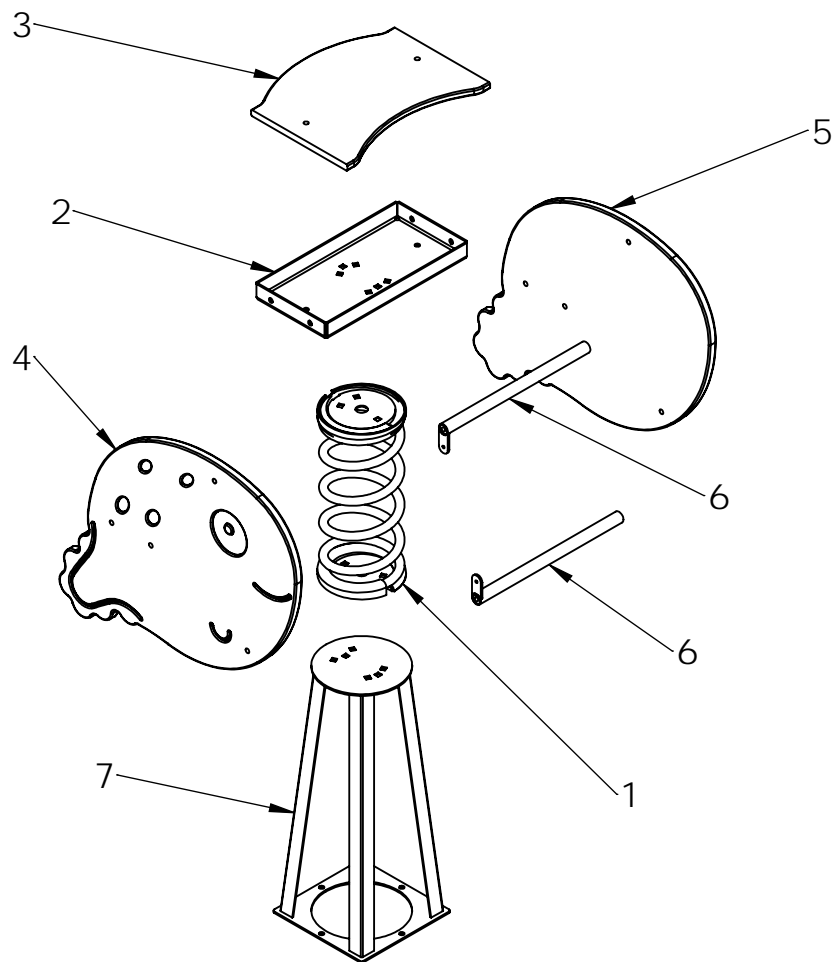
Tiptiptap^{öö}

WEIGHT:

SCALE: 1:25

A 4

SHEET 4 OF 10



ITEM NO.	PART NUMBER	QTY.
1	Spring 170mm with spring discs	1
2	Seat console for a single spring rocker	1
3	VL038 seat	1
4	VL038 panel left	1
5	VL038 panel right	1
6	Guardrail D 25x400	2
7	Ground fixing	1

UNLESS OTHERWISE SPECIFIED:
DIMENSIONS ARE IN MILLIMETERS
WEIGHT ARE IN KILOGRAMM

Product code:

VL038

NAME

SIGNATURE

DATE

DRAWN

K.Männik

7/24/2025

DESCRIPTION:

Spring swing CORA



Tiptap OÜ

WEIGHT:

SCALE: 1:15

A 4

SHEET 5 OF 10

A

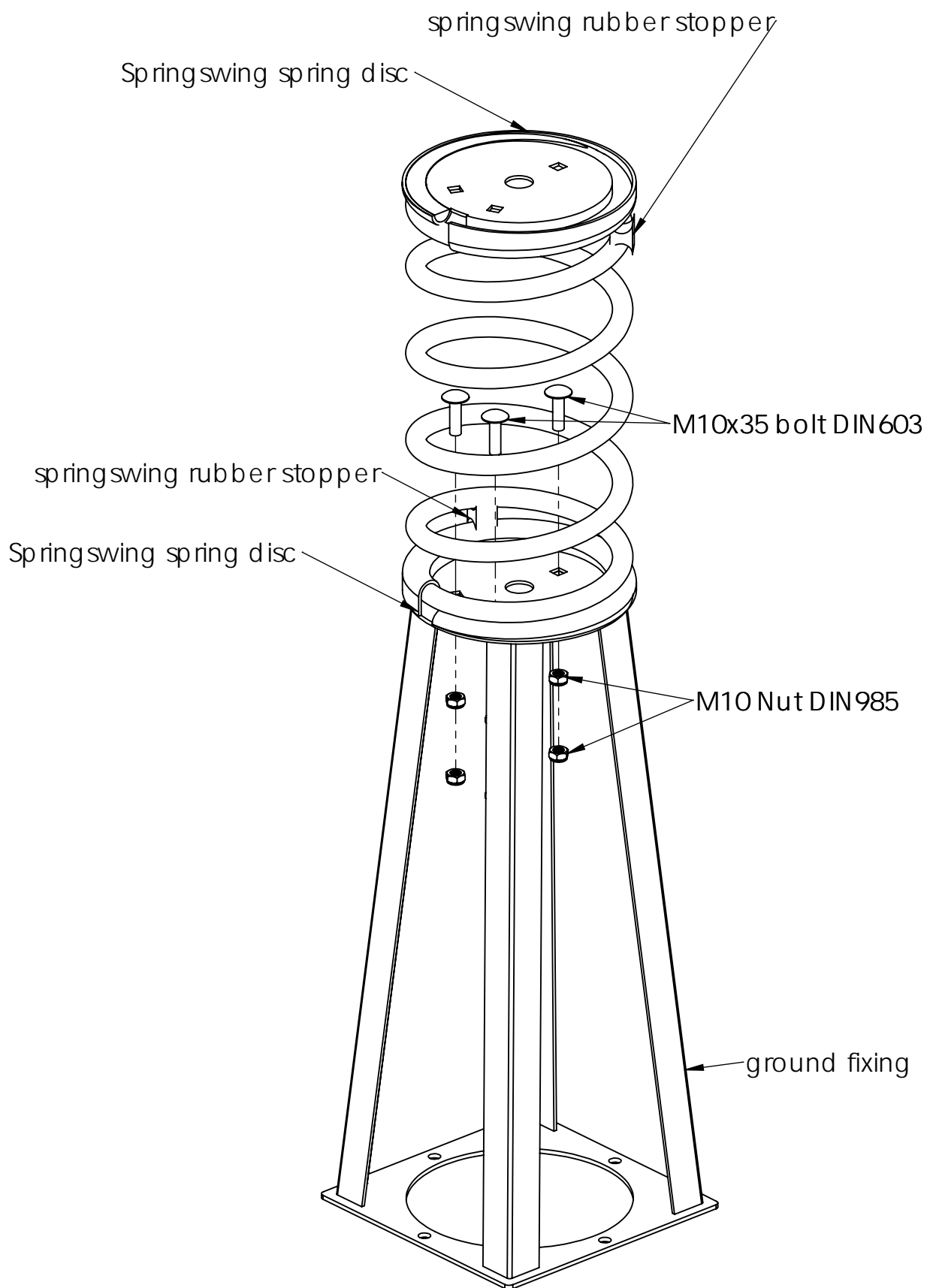
B

C

D

E

F



UNLESS OTHERWISE SPECIFIED:
DIMENSIONS ARE IN MILLIMETERS
WEIGHT ARE IN KILOGRAMM

PART NUMBER / DWG NO.:

VL038

	NAME	SIGNATURE	DATE	REVISION
DRAWN	K.Männik		7/24/2025	
APPV'D				

DESCRIPTION:

Spring swing CORA

MATERIAL:

wood, metal, plastik

A 4

WEIGHT:

SCALE: 1:5

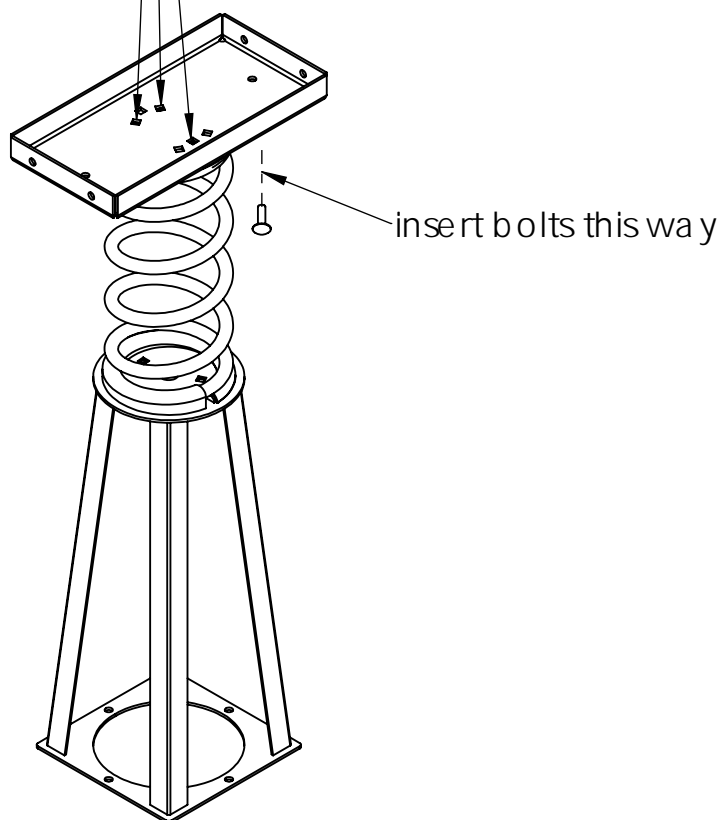
SHEET 6 OF 10



Tiptiptap OÜ

Central console to spring assembly

M10x35 bolt DIN 603 x3
M10 nut DIN 985 x6
(double nuts for all bolts)



UNLESS OTHERWISE SPECIFIED:
DIMENSIONS ARE IN MILLIMETERS
WEIGHT ARE IN KILOGRAMM

Product code:

VL038

NAME

SIGNATURE

DATE

DRAWN

K.Männik

7/24/2025

DESCRIPTION:

Spring swing CORA



Tiptap OÜ

WEIGHT:

SCALE: 1:10

SHEET 7 OF 10

A 4

Side panel to console assembly

A

B

C

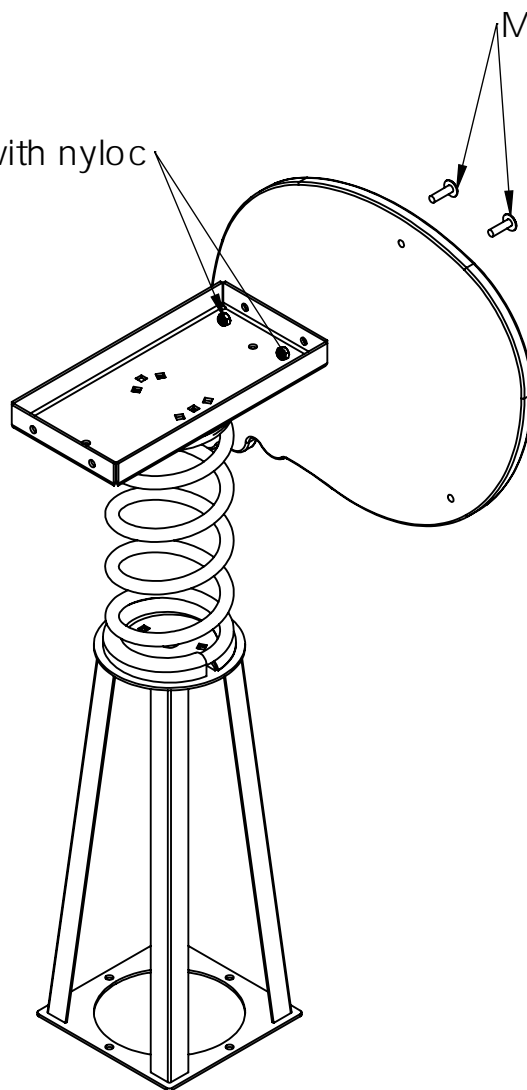
D

E

F

M10 nut DIN 985 with nyloc

M10x35 DIN 603



UNLESS OTHERWISE SPECIFIED:
DIMENSIONS ARE IN MILLIMETERS
WEIGHT ARE IN KILOGRAMM

Product code:

VL038

NAME

SIGNATURE

DATE

DRAWN

K.Männik

7/24/2025

DESCRIPTION:

Spring swing CORA



Tiptap^{OO}

WEIGHT:

SCALE: 1:10

A 4

SHEET 8 OF 10

Seat assembly

M10x70 DIN 603 bolt

M12 Nut cover

M10 Washer DIN 9054

nut DIN 985 with nyloc

M12 Nut cover cap

Rear end

Front end

UNLESS OTHERWISE SPECIFIED:
DIMENSIONS ARE IN MILLIMETERS
WEIGHT ARE IN KILOGRAMM

Product code:

VL038

DESCRIPTION:

Spring swing CORA

DRAWN

NAME
K.Männik

SIGNATURE

DATE

7/24/2025

Tiptap^{OO}

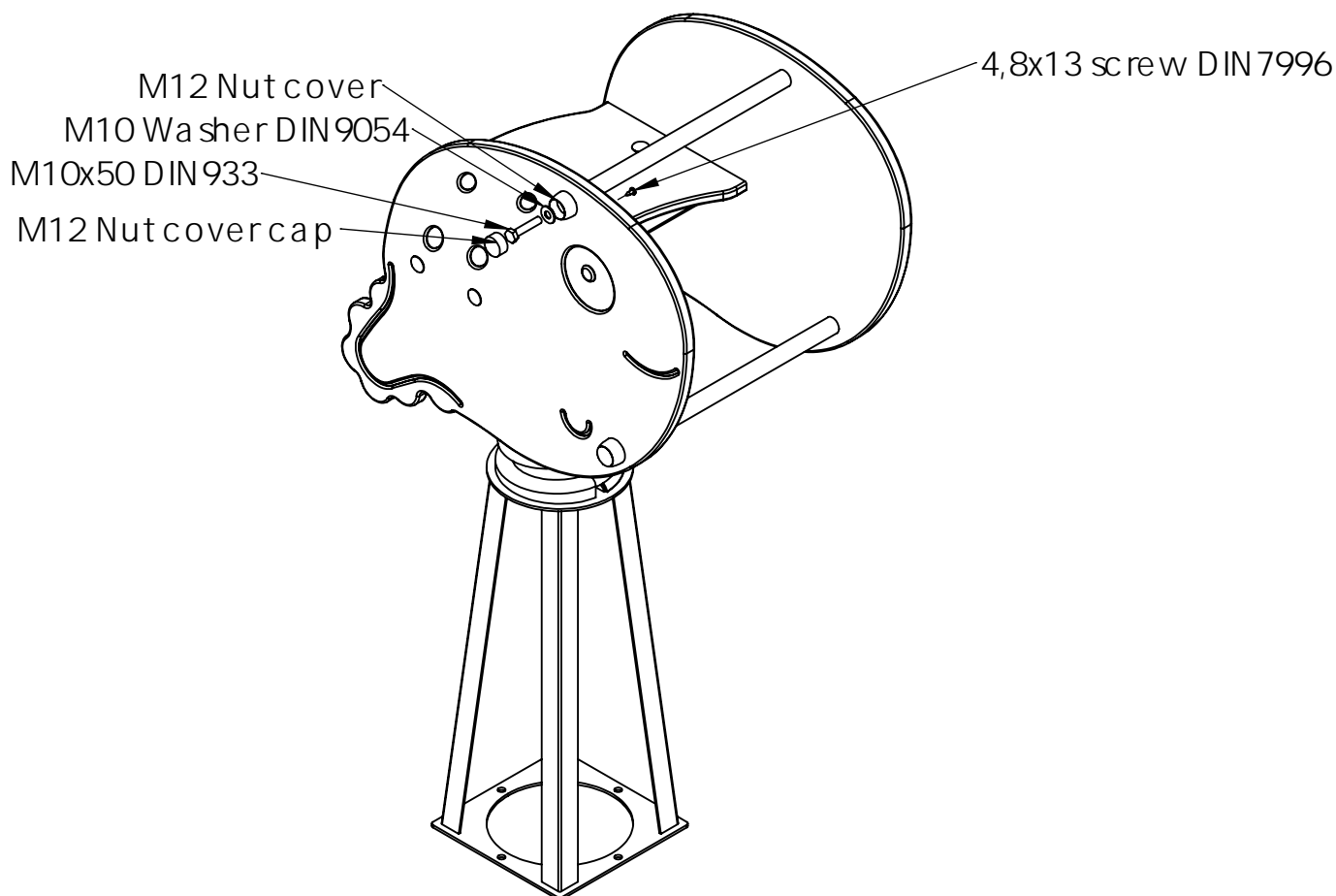
WEIGHT:

SCALE: 1:10

A 4

SHEET 9 OF 10

Guardrail assembly



UNLESS OTHERWISE SPECIFIED:
DIMENSIONS ARE IN MILLIMETERS
WEIGHT ARE IN KILOGRAMM

Product code:

VL038

NAME

SIGNATURE

DATE

DRAWN

K.Männik

7/24/2025

DESCRIPTION:

Spring swing CORA



Tiptap OÜ

A 4

WEIGHT:

SCALE: 1:10

SHEET 10 OF 10